

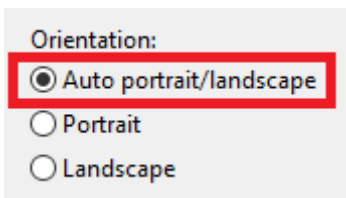
Adobe Reader DC

If Adobe does not have the option to [Tile All Pages] when printing, it may not be supported.

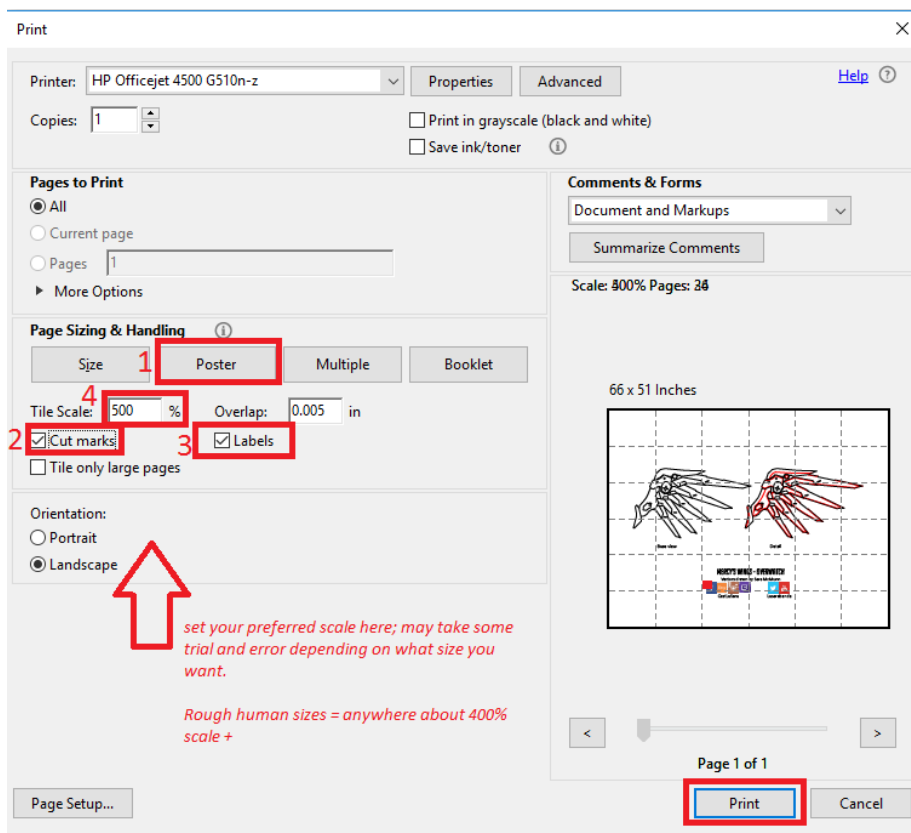
Below instructions apply if you have a standard office printer that usually handles letter size (8.5 x 11" paper). Otherwise if you have a large scale printer, you will need to consult your printer's manual or adjust the scaling according to your large scale printer's settings.

1. Open your PDF file with Adobe Reader DC
2. Click File > Print

Refer to image below



On the bottom, set your orientation to **Auto portrait/landscape**



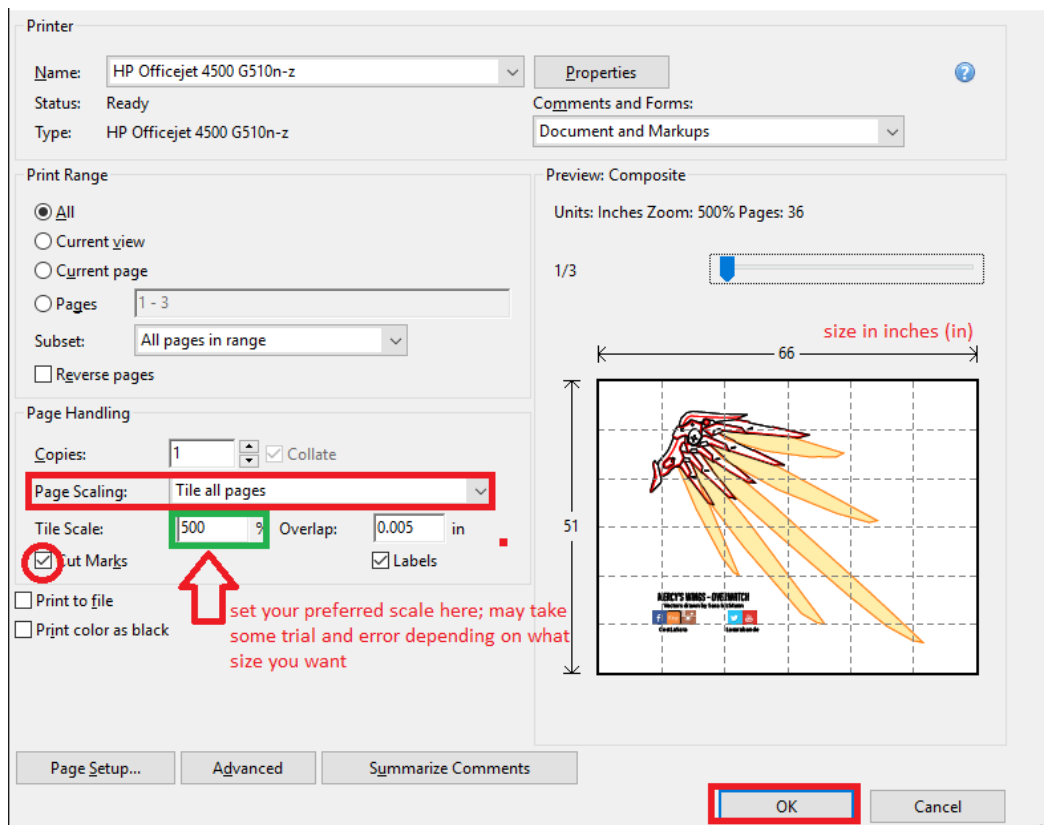
Adobe Acrobat / Reader X

If Adobe does not have the option to [Tile All Pages] when printing, it may not be supported.

Below instructions apply if you have a standard office printer that usually handles letter size (8.5 x 11" paper). Otherwise if you have a large scale printer, you will need to consult your printer's manual or adjust the scaling according to your large scale printer's settings.

1. Open your PDF file with Adobe Acrobat / Reader
2. Click File > Print

Refer to image below



Set Page Scaling to [Tile all pages], then experiment as to how much you want your scale to be under [Tile Scale %, in green]. Results may vary as no two body sizes are the same.

For more information, please visit: <https://helpx.adobe.com/acrobat/kb/print-posters-banners-acrobat-reader.html>

Feel free to contact me on my social media pages if you have any questions!



CestLaSara



Lasarabande