

*Costume
Fashion*

- Li Ming -

(Heroes of the Storm)

Armor Pattern Kit



Introduction

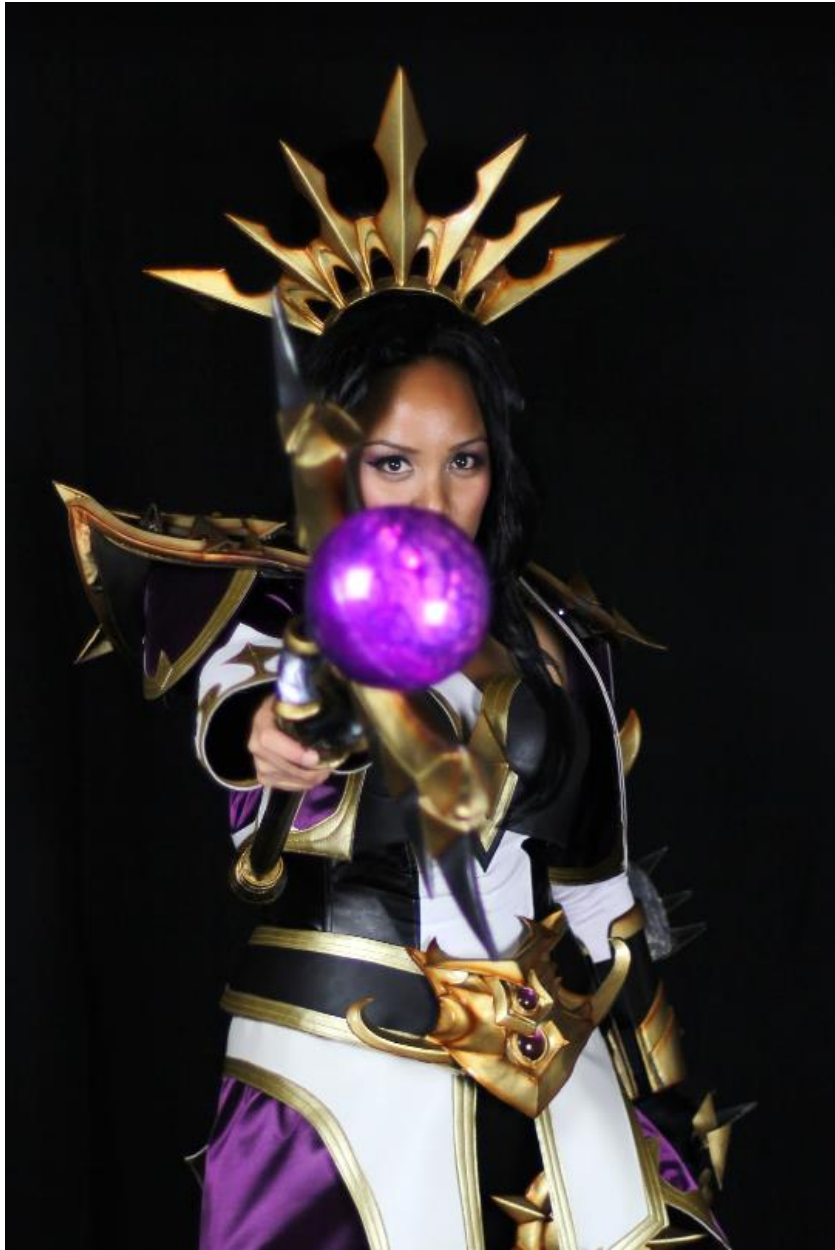
Hey guys! I'm **Sara McMunn** of **C'est La Sara**. I would like to thank you for purchasing my Li Ming Armor Pattern Kit, and I hope that you find this useful as you craft your own next masterpiece. I debuted this costume as part of Blizzcon 2016 and have documented every step of the way of this costume. You can watch my **Twitch Past Broadcasts** ([twitch.tv/CestLaSara](https://www.twitch.tv/CestLaSara)) on full real-time videos on how I constructed Li Ming.

This is the first of many armor PDF kits I plan on releasing once I have tested them to my standards. On the honor code, it would be greatly appreciated if you please do not openly distribute or publish this online for free use as I have dedicated a lot of my time and effort into producing these patterns. **Nevertheless, I enjoy helping the cosplay community no doubt 😊**

Please let me know if you have any questions or suggestions!

C'est La Sara





Acknowledgements

Thank you to the following...

[Kinpatsu Cosplay](#) – For the informative Li Ming Making-Of pack... I used this for ideas and inspiration!

[Sakuraflame](#) – Merci ma soeur pour l'inspiration et de vos idées en faisant le cosplay Li Ming :D <3

Sean McMunn – The husband! For being both my photographer and at-con handler!

You! For being such a supportive, informative, and loving community!

What's Included?

Disclaimer: The armor patterns in this kit are scaled to my body size. (I'm 5'1", or 155cm) You may need to use these as reference for tracing or scaling to a different size to fit your needs. I have put my whole entire cosplay set on a thin BMI mannequin 5'8" (or approx. 175cm) and it still looks ok for perspective.

This armor pattern kit includes:

- Crown (p. 8 – 10)
- Choker (p. 11)
- Shoulder armor (p. 12 – 15)
- Left forearm band armor (p. 16 – 18)
- Left hand armor (p. 19)
- Left hand claws (p. 20)
- Belt Buckle (p. 21 -22)
- Thighs armor (p. 23- 25)
- White skirt spikes (p. 26)
- Butt cape appliqués (p. 27 – 29)
- Shin guards, no shoes (p. 30 – 33)

This armor pattern file does NOT include:

- Specific instructions on making this costume
- Fabric patterns¹
- Breastplate pattern¹
- Shoe pattern²
- Weapon pattern³



¹ Everyone has unique body types so this will need to be done on your own.



² You will need to pattern your own set of shoes.

³ This is sold separately here: <https://www.etsy.com/listing/267574521/cosplay-pdf-vector-pattern-blueprint-li>

IRL vs. Mannequin Perspective

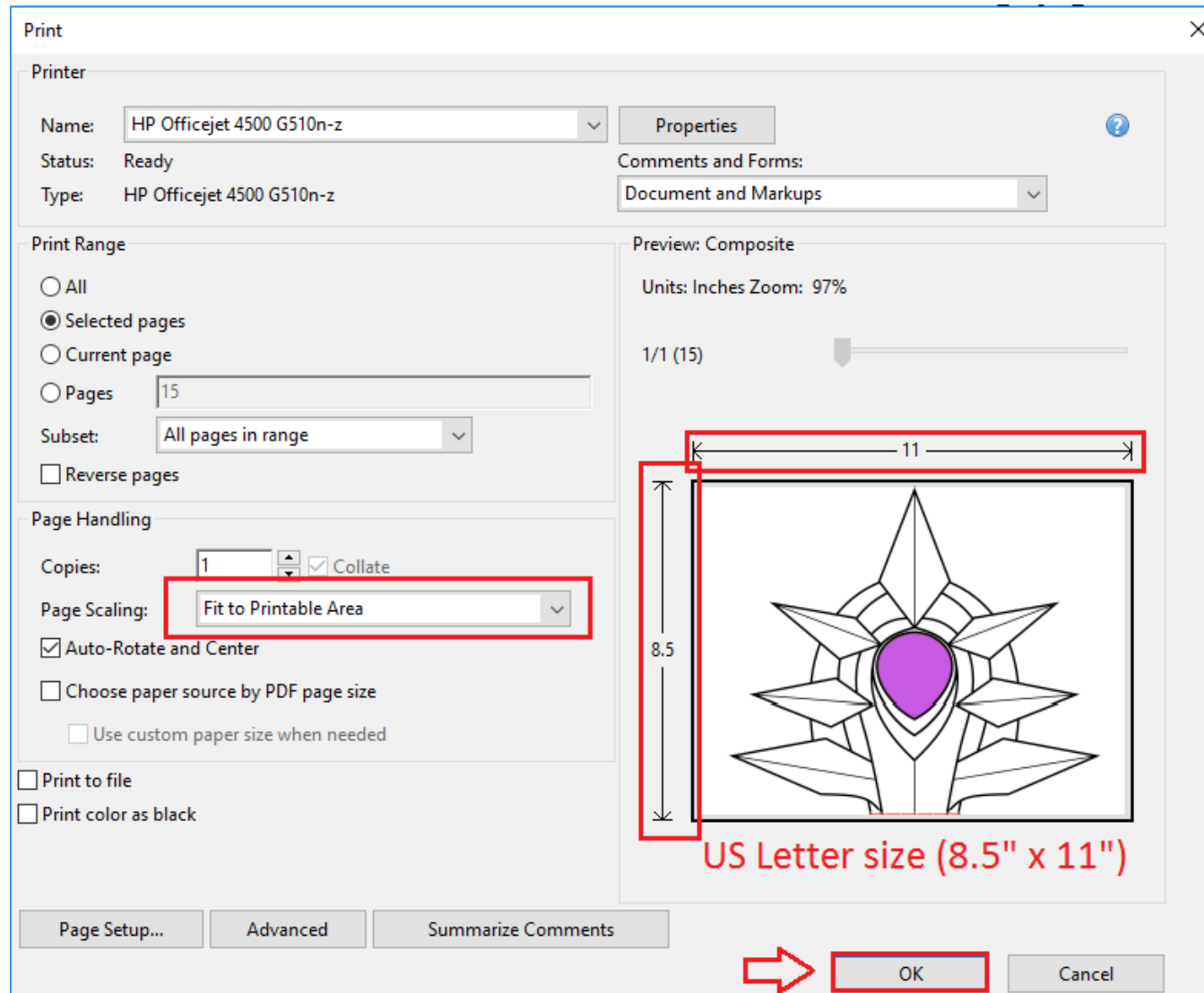
Using the **same costume**, draped on **different body types**.

The patterns in this kit are the **same scale** to the armor pieces I have made for myself.

Me	Mannequin
5'1" // 155 cm	5'8" // 175 cm
Average build	Slender
	

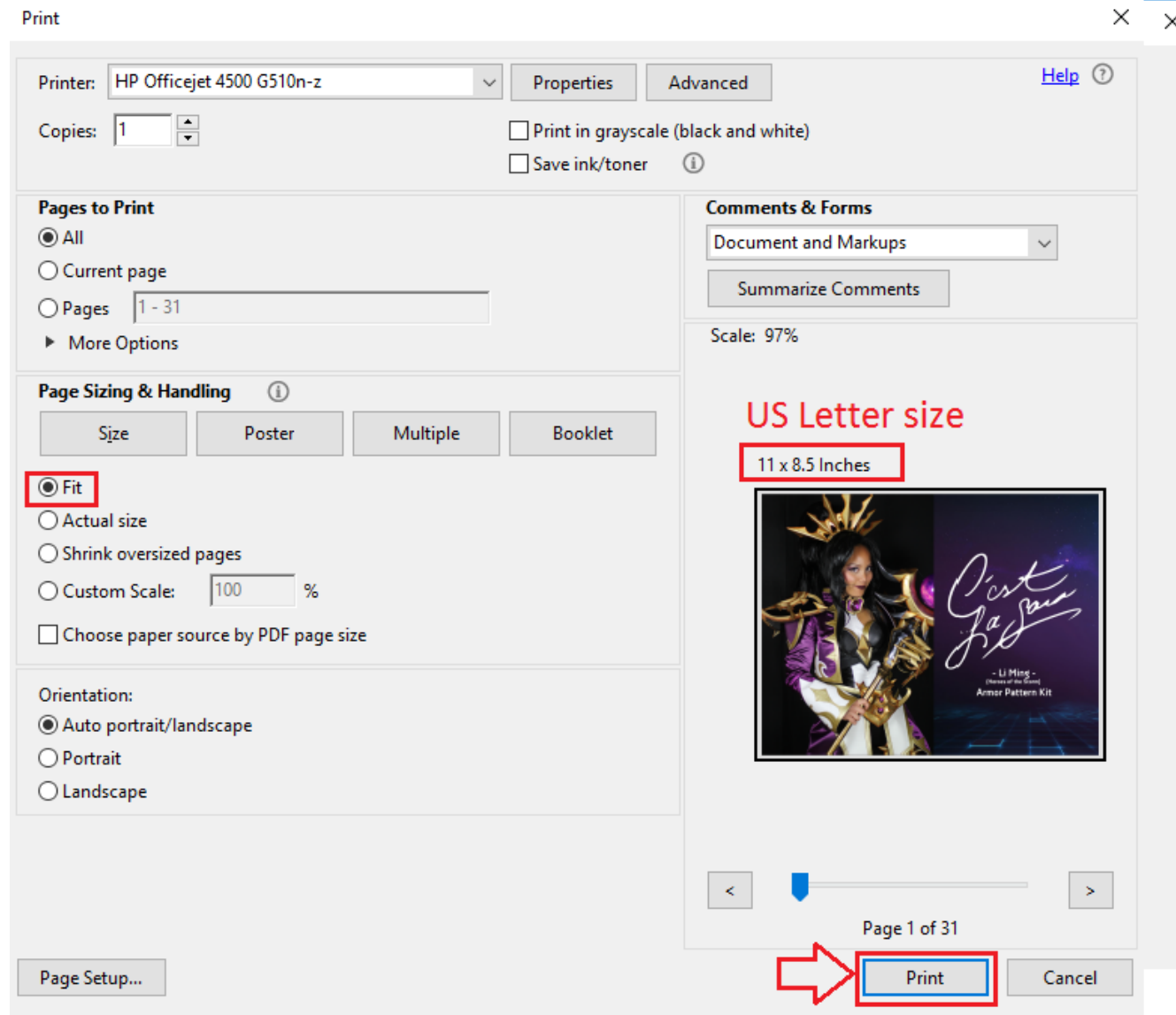
Printing (Adobe Acrobat X)

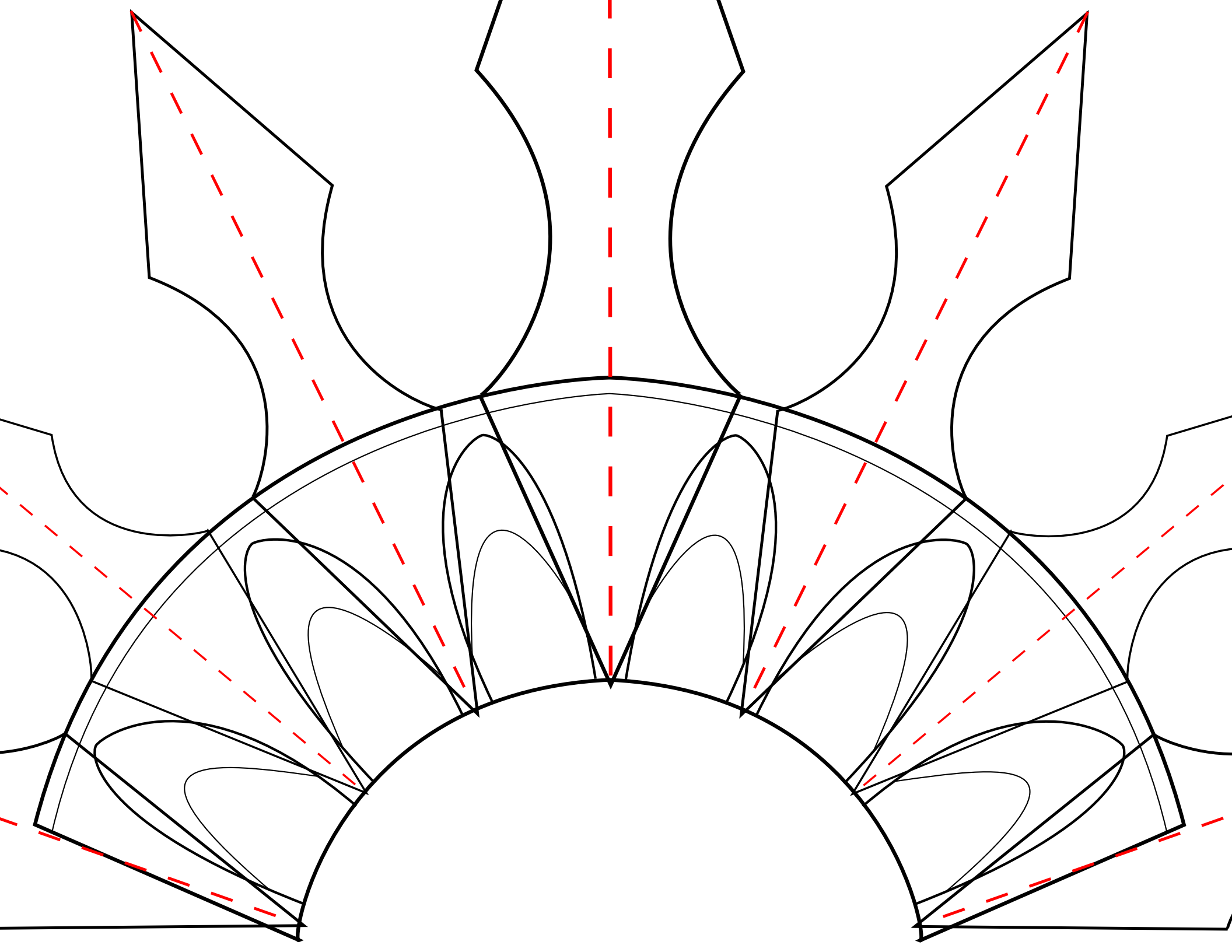
When printing the PDF from **Adobe Acrobat X** – Make sure Page Scaling is set to “**Fit to Printable Area**” and that you are printing in **US Letter (8.5” x 11”)**. If you print A4 you may need to adjust your individual printer settings to print US Letter. Please note that no additional print scaling is required if you are using the same size patterns as me.

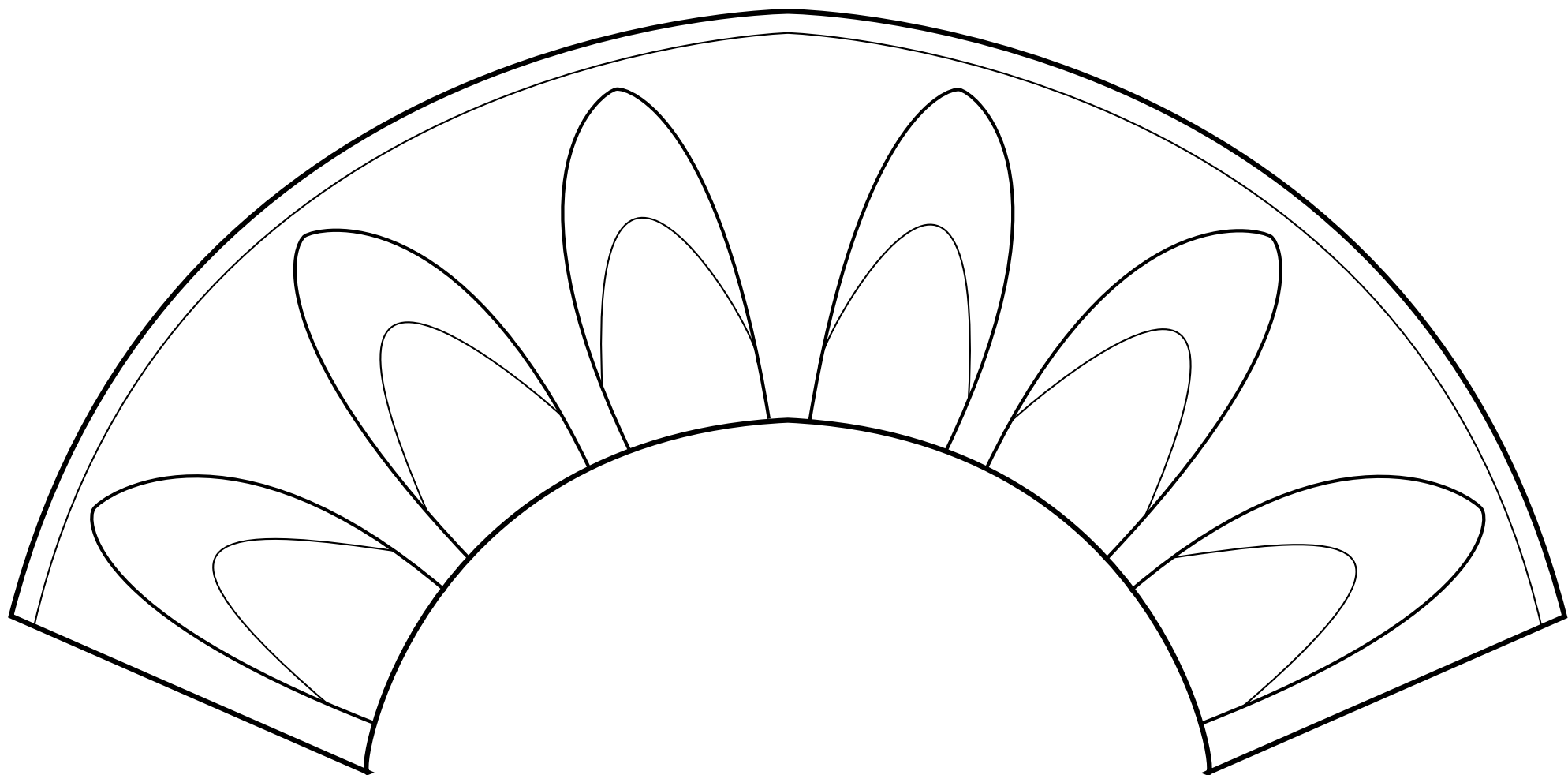


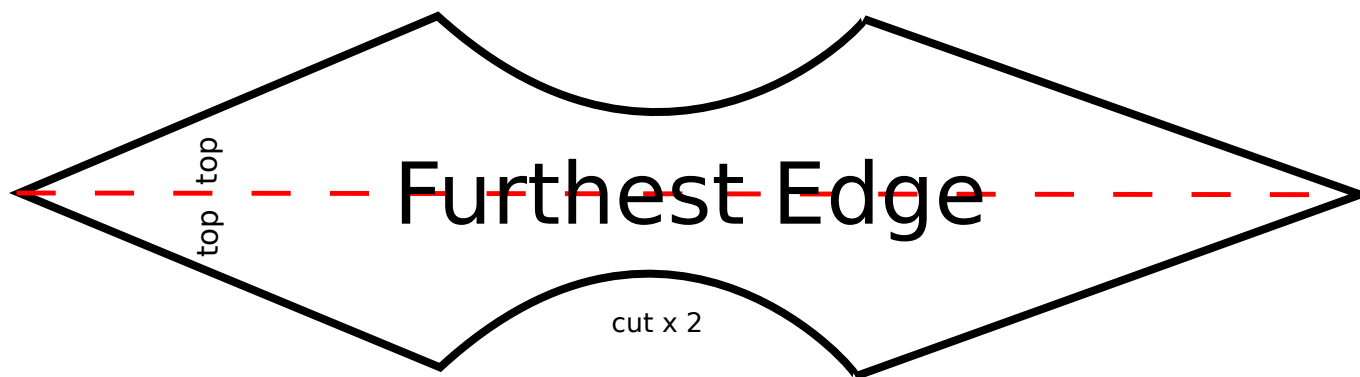
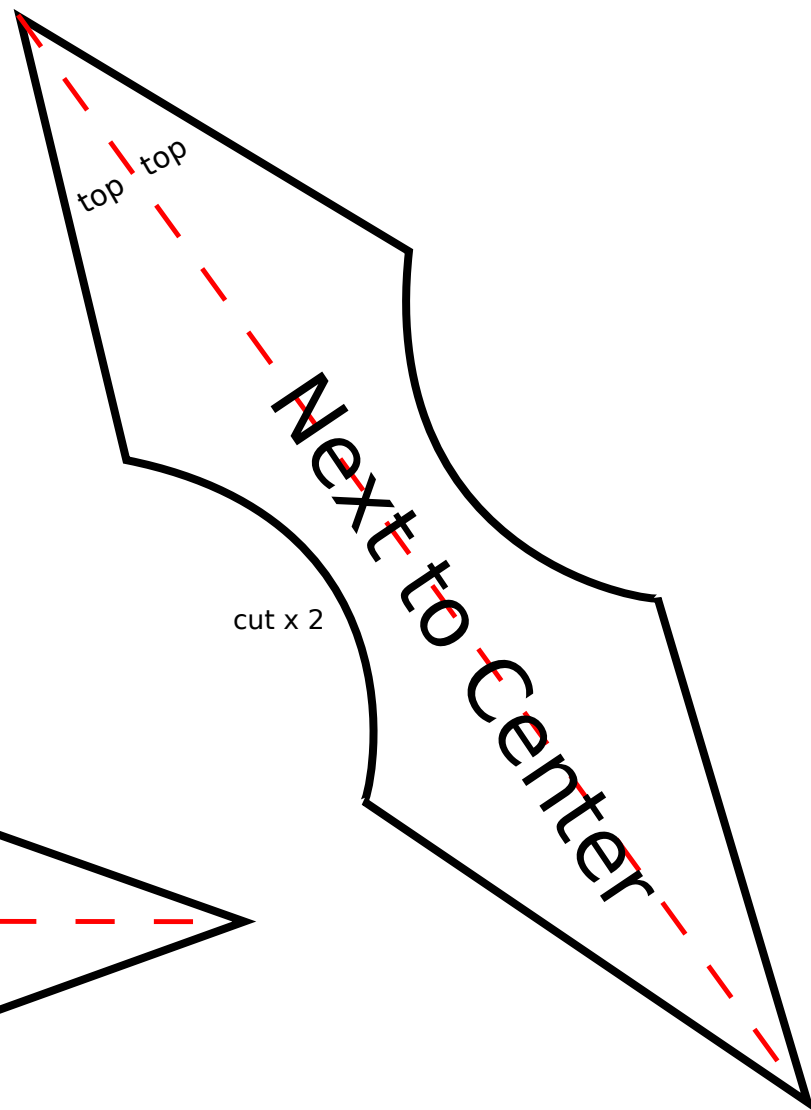
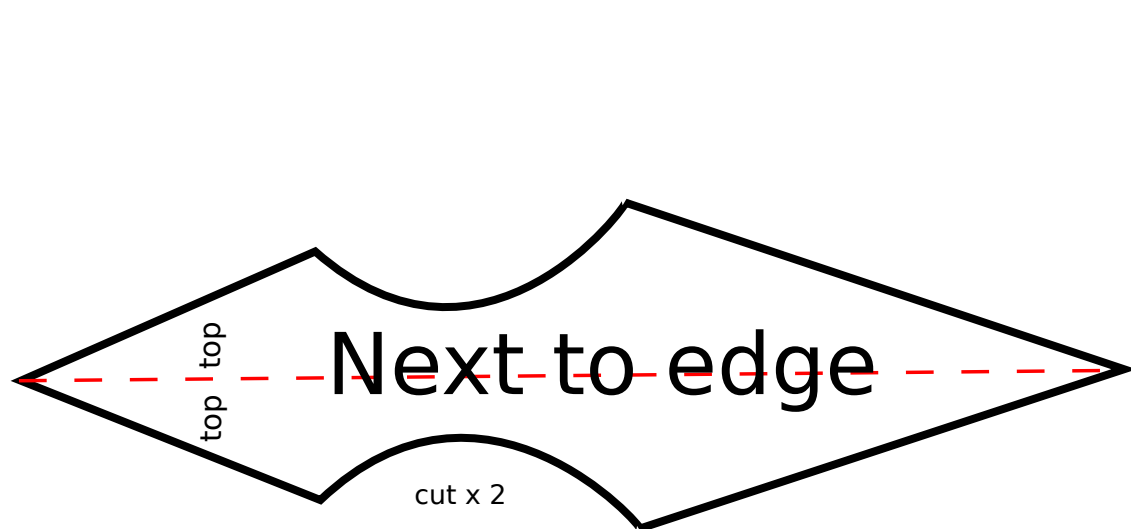
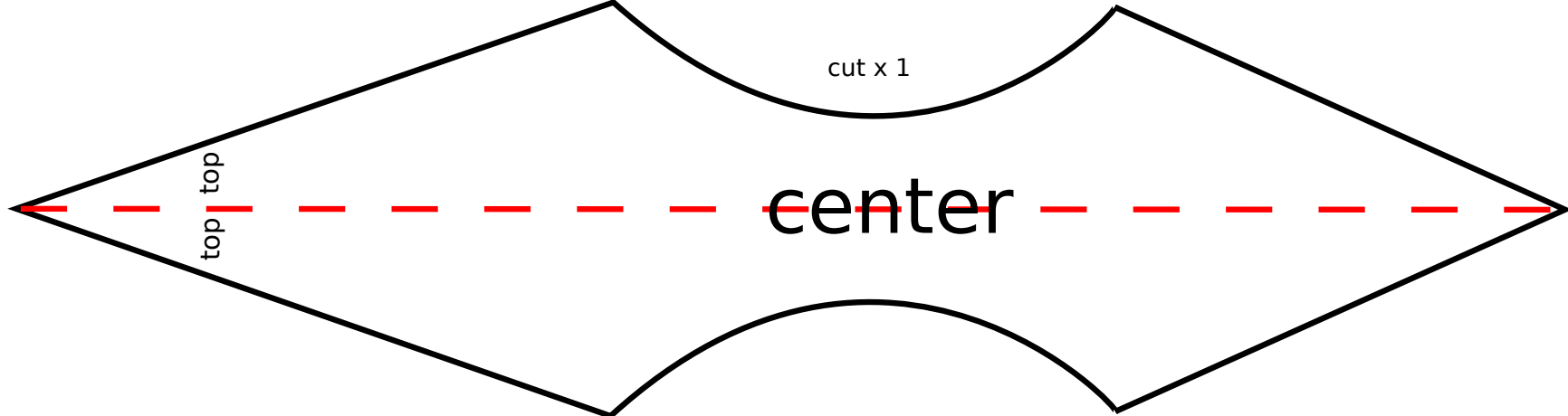
Printing (Adobe Acrobat Reader DC)

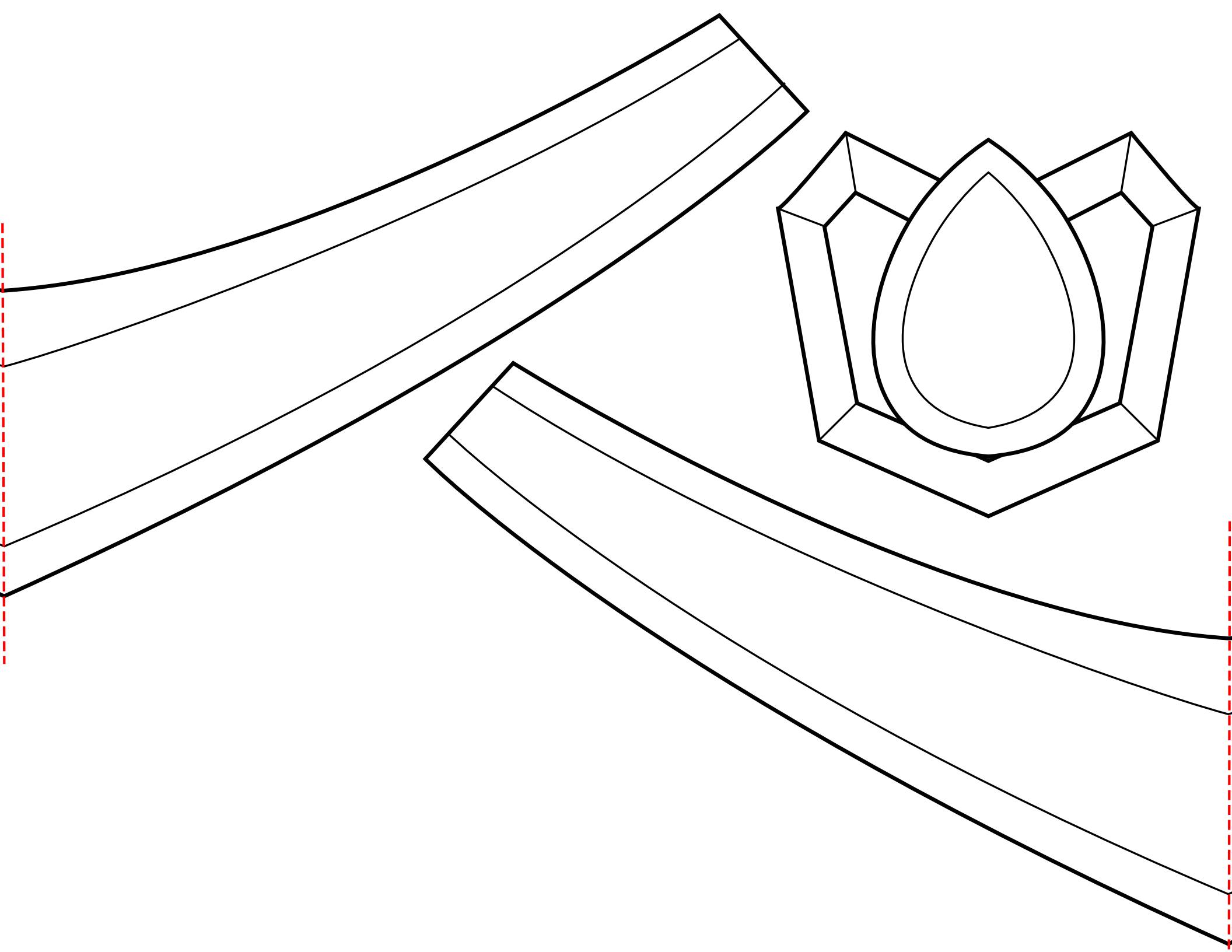
When printing the PDF from **Adobe Acrobat Reader DC or higher** – Make sure Paper Sizing & Handling is set to **“Fit”** and that you are printing in **US Letter (8.5” x 11”)**. If you print A4 you may need to adjust your individual printer settings to print US Letter. Please note that no additional print scaling is required if you are using the same size patterns as me.

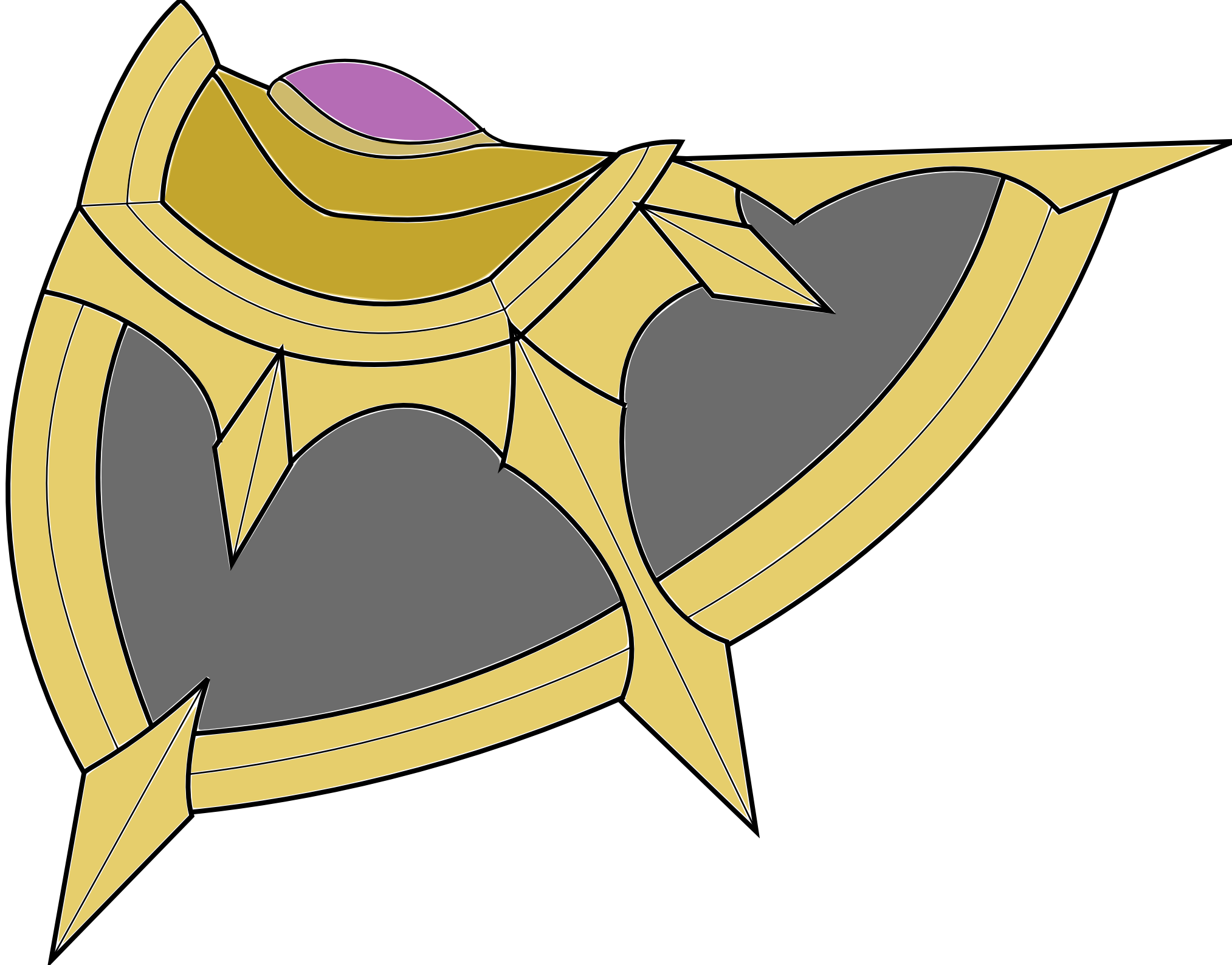


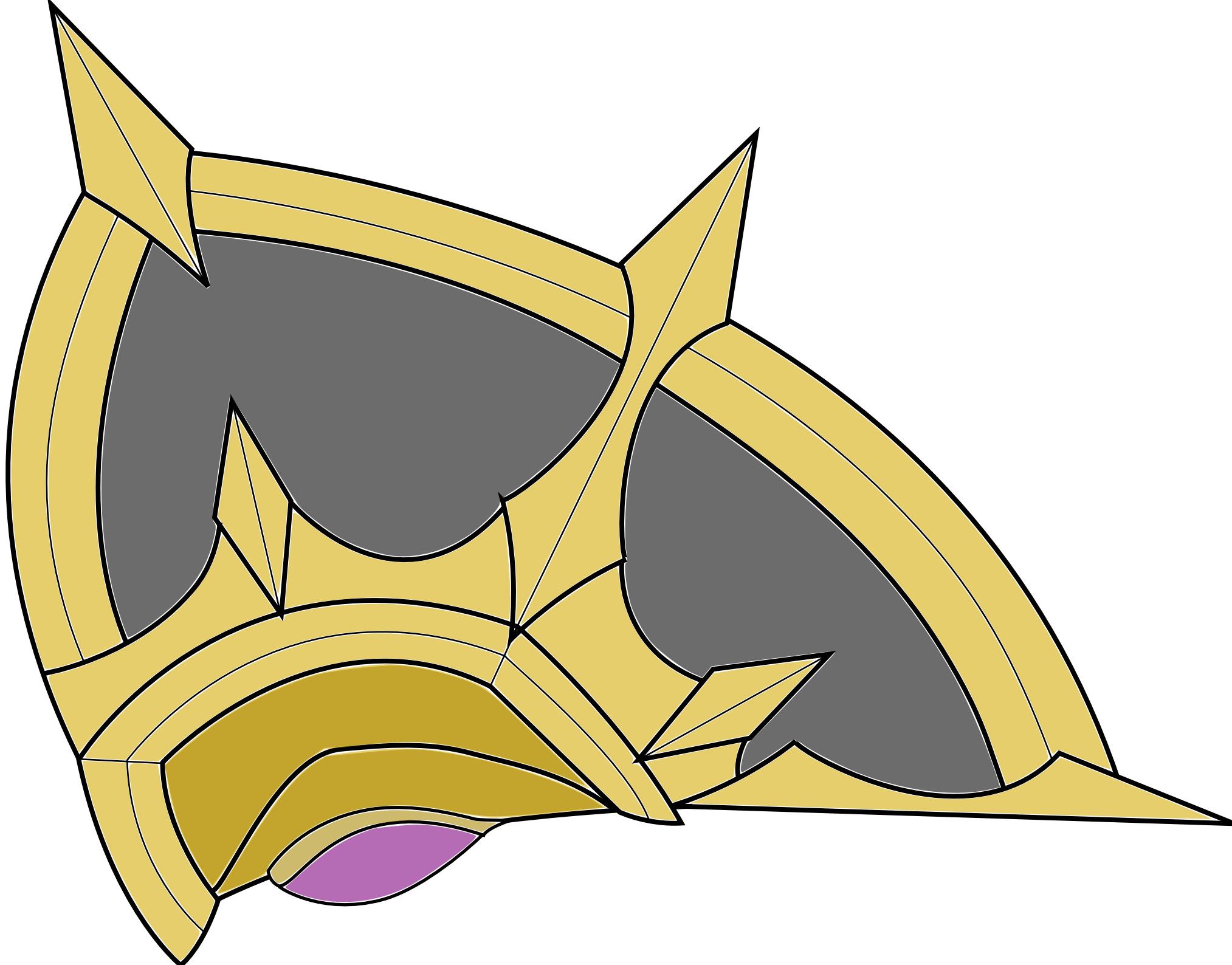






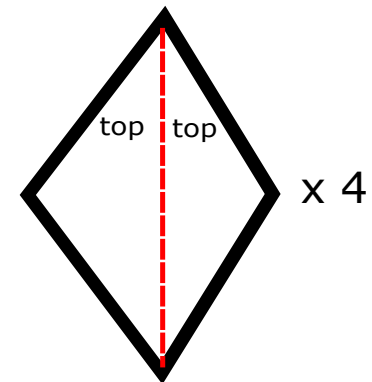
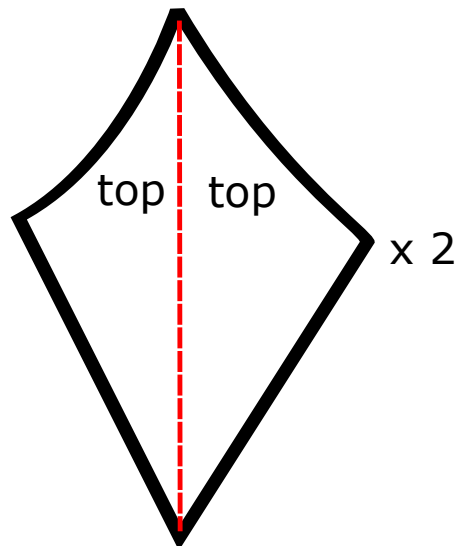
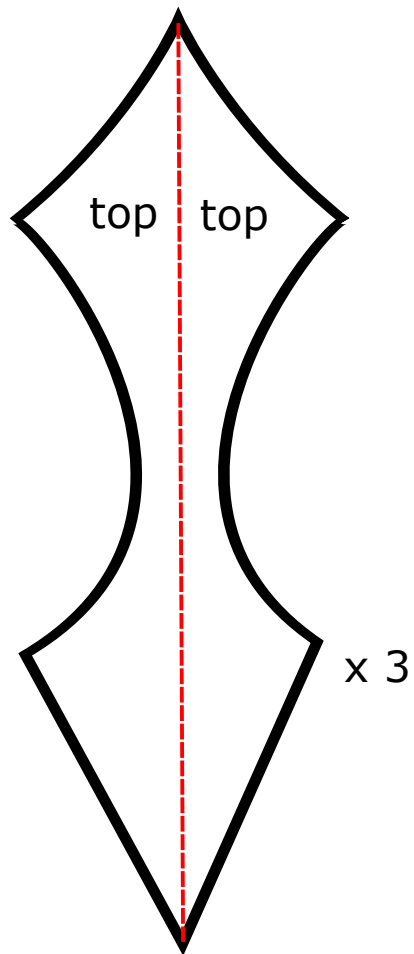


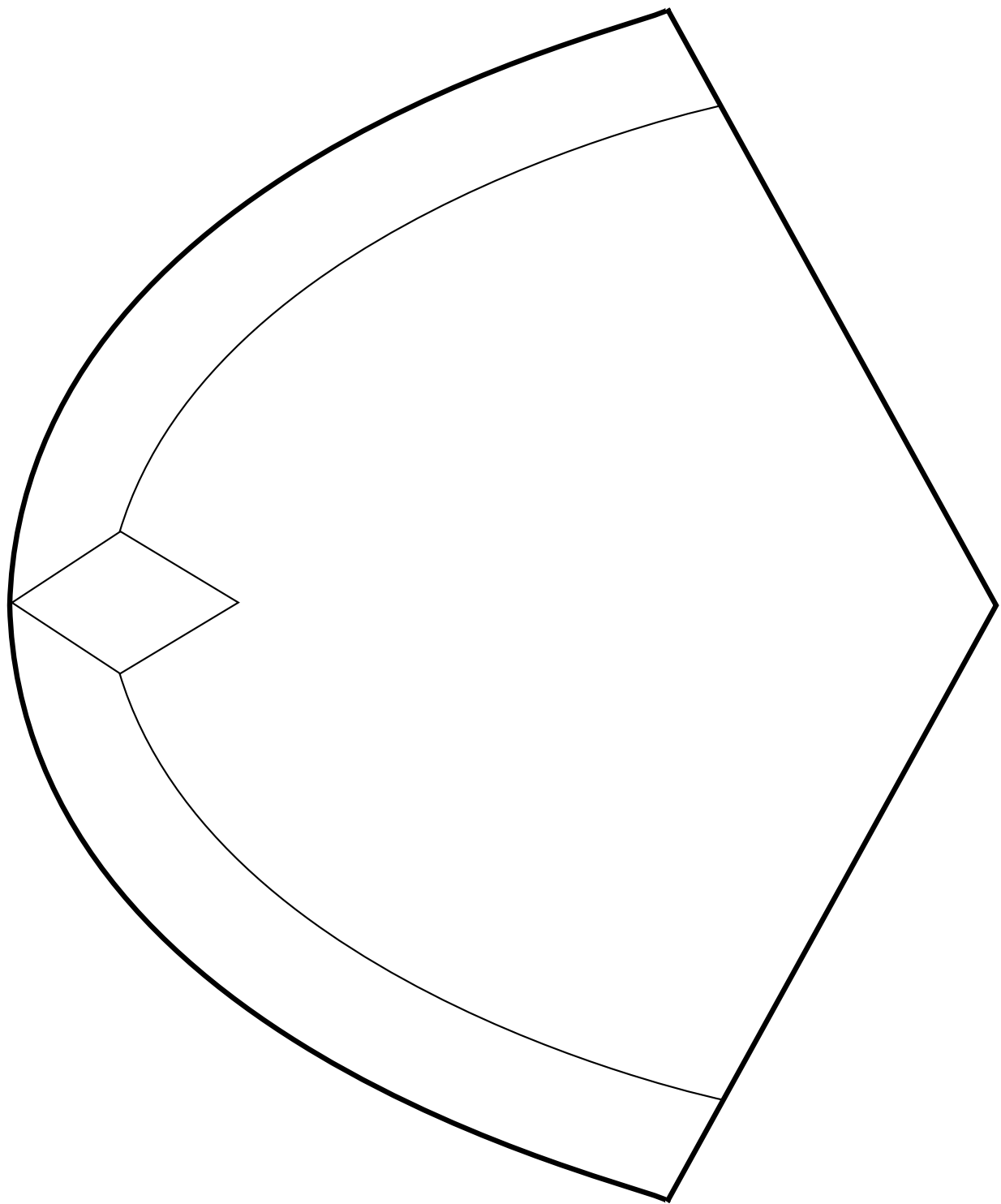


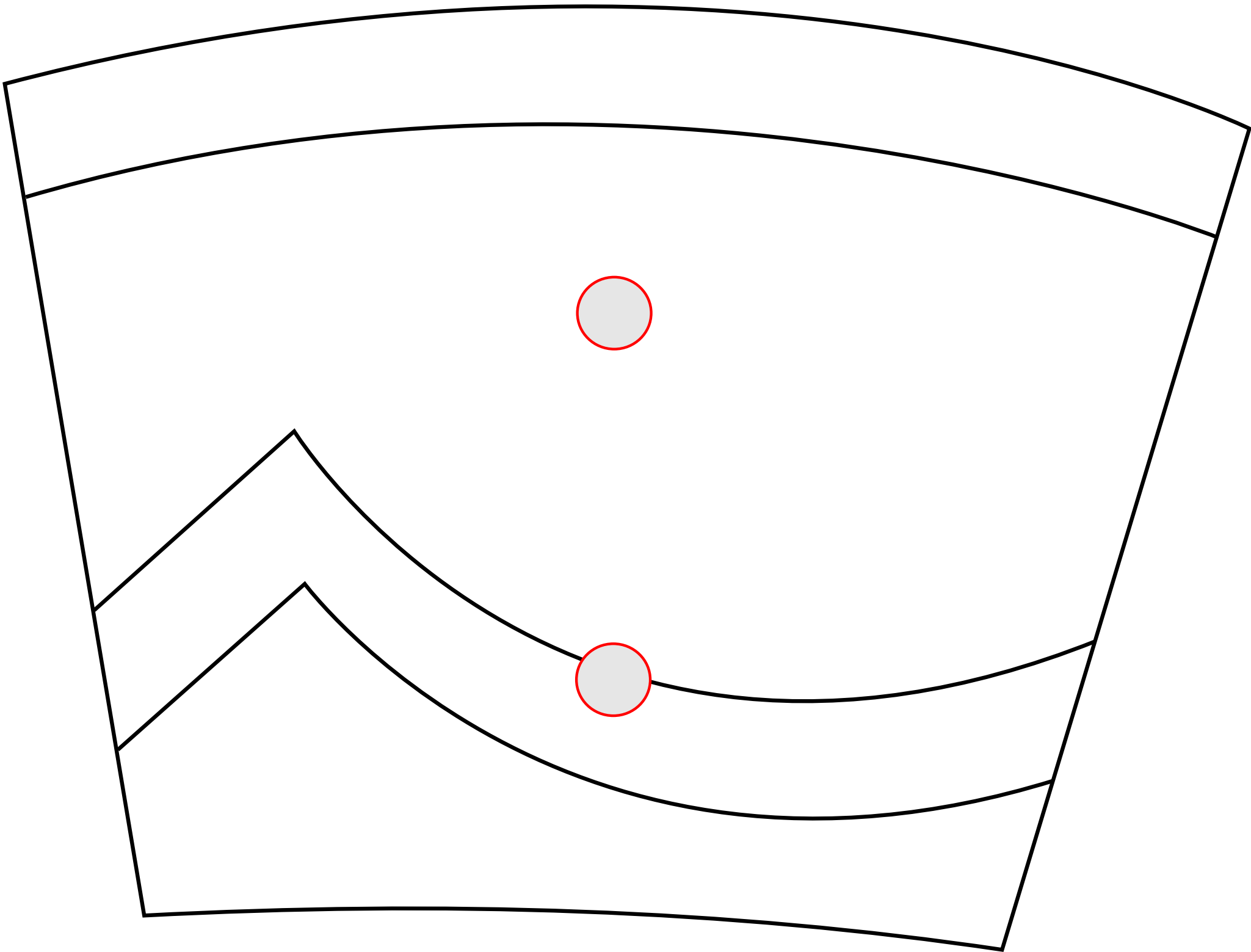


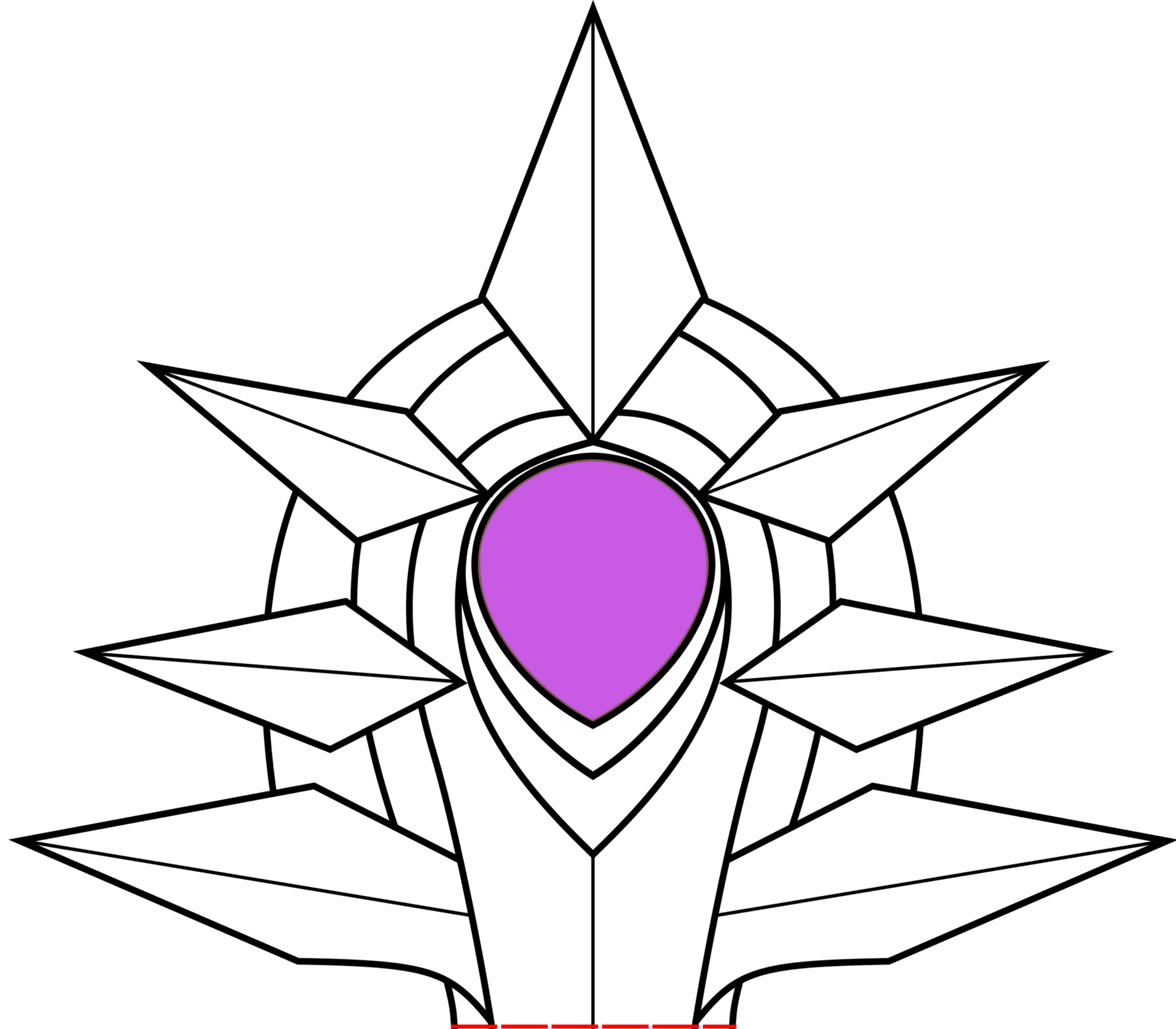
Optional Bevel Fold Spikes

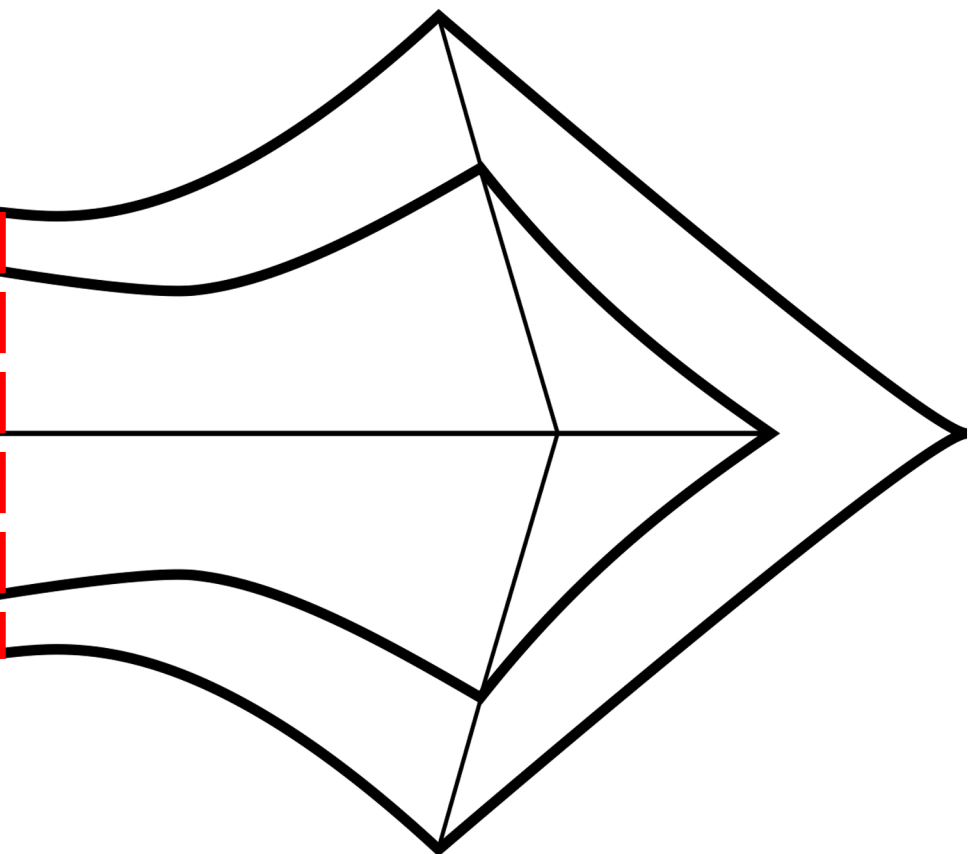
If you want to **bevel** fold your shoulder spike details, please refer to this page.
Otherwise, use the previous spike details in the shoulder pattern to cut them flat.

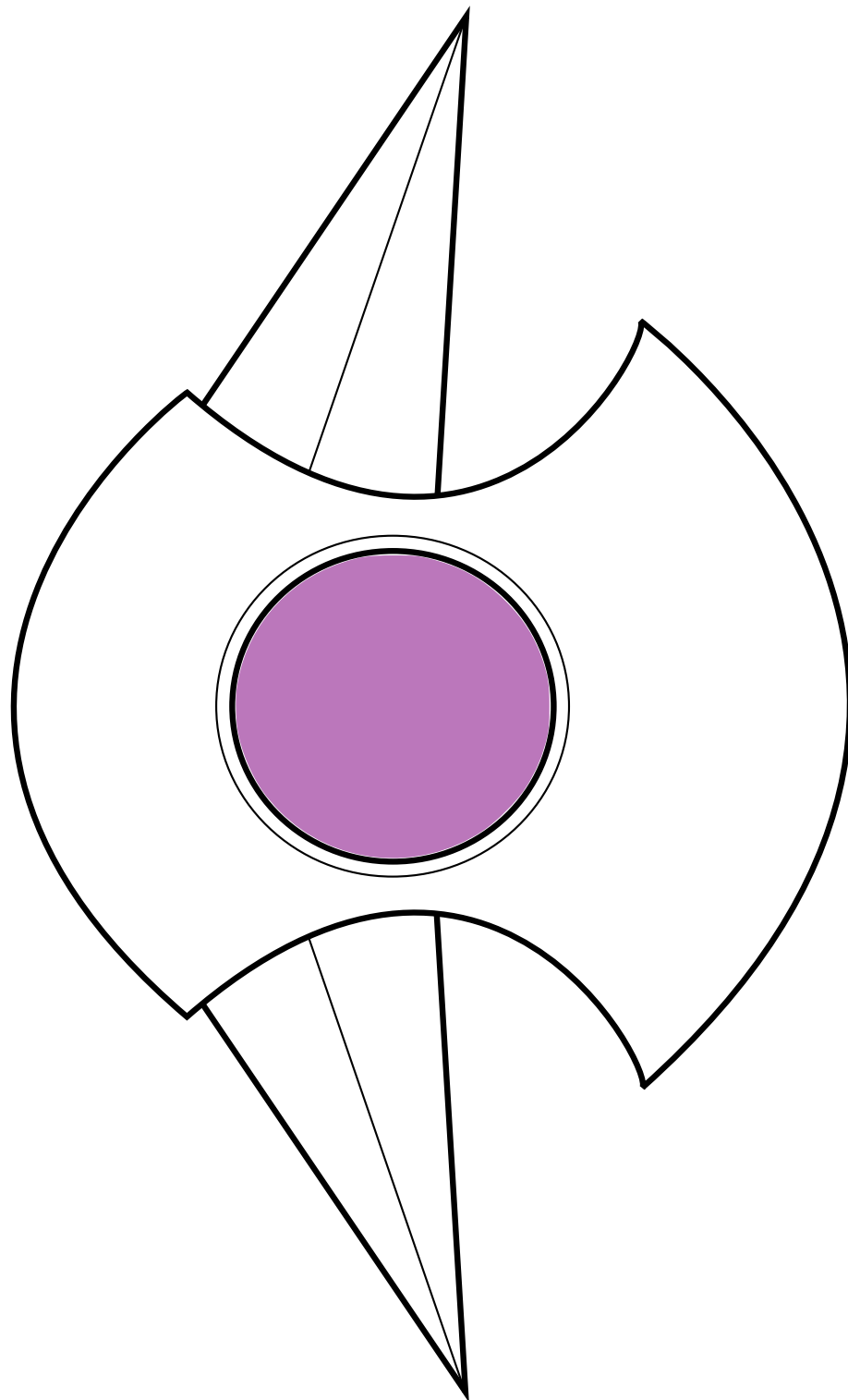


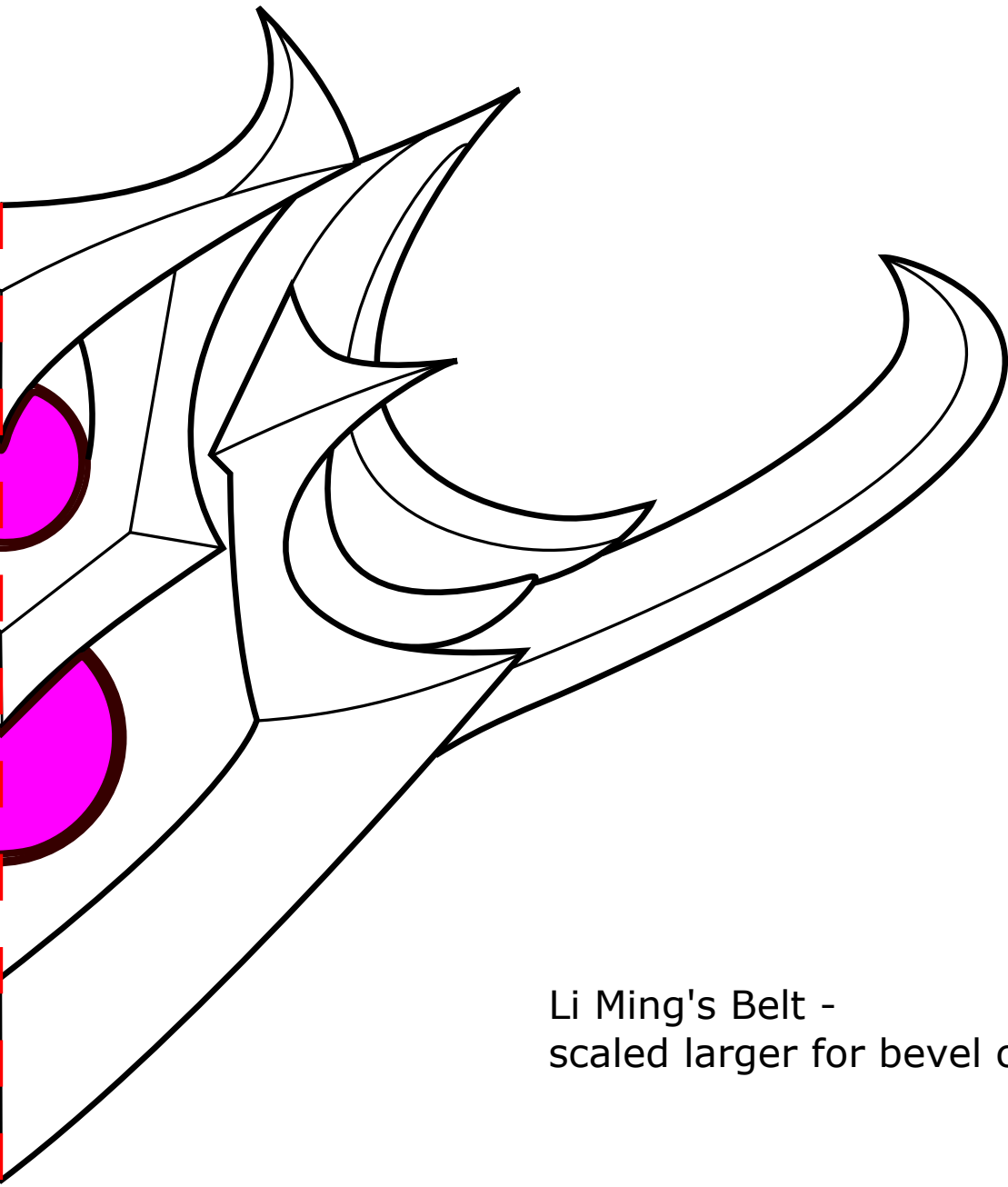




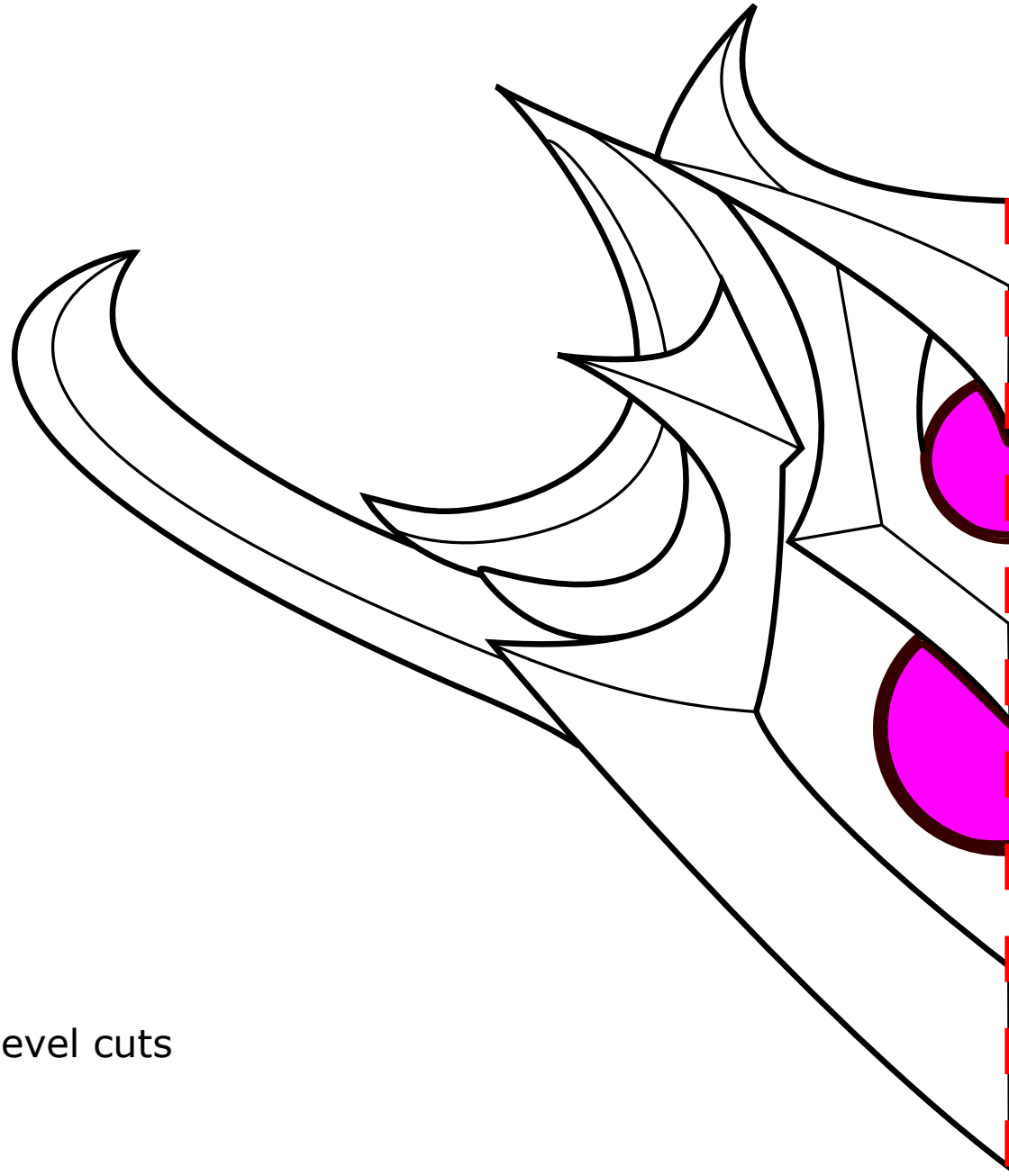




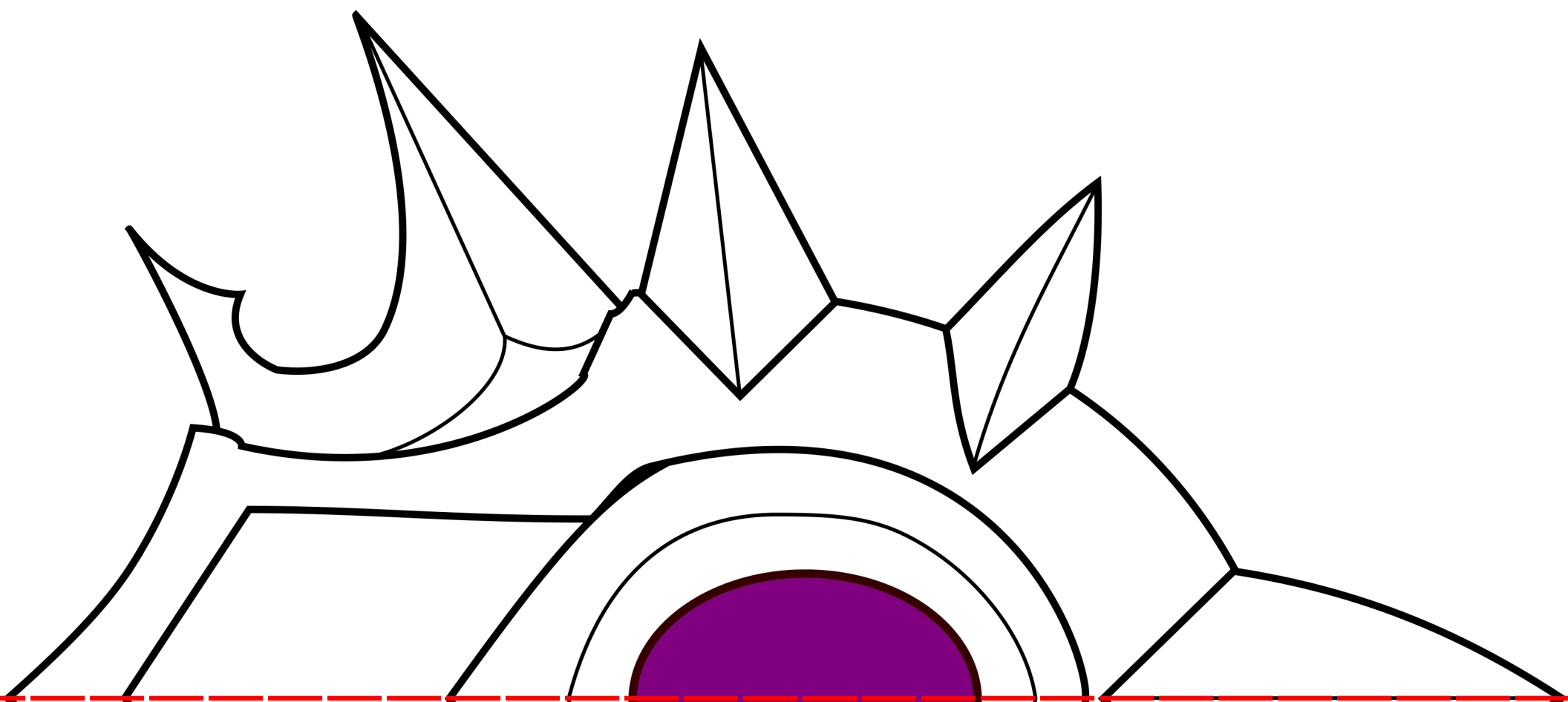


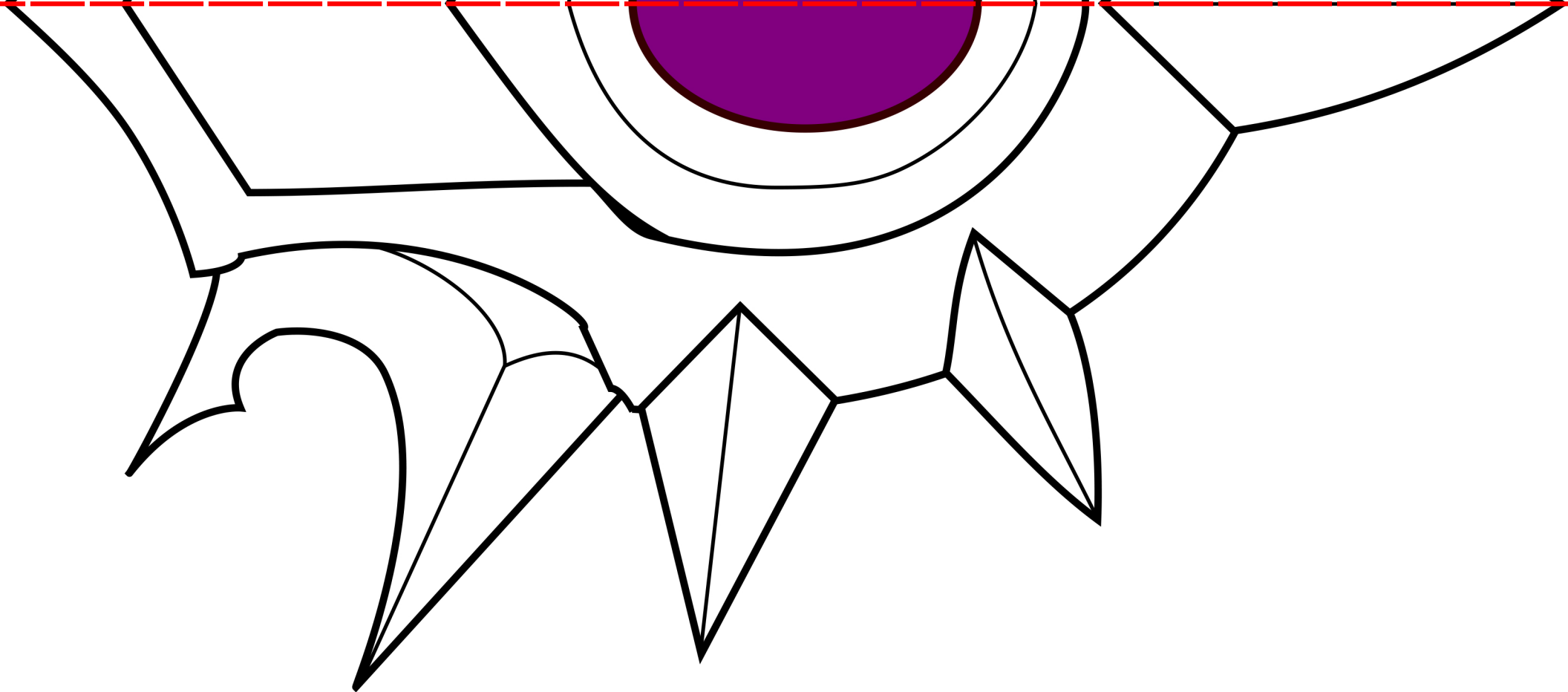


Li Ming's Belt -
scaled larger for bevel cuts

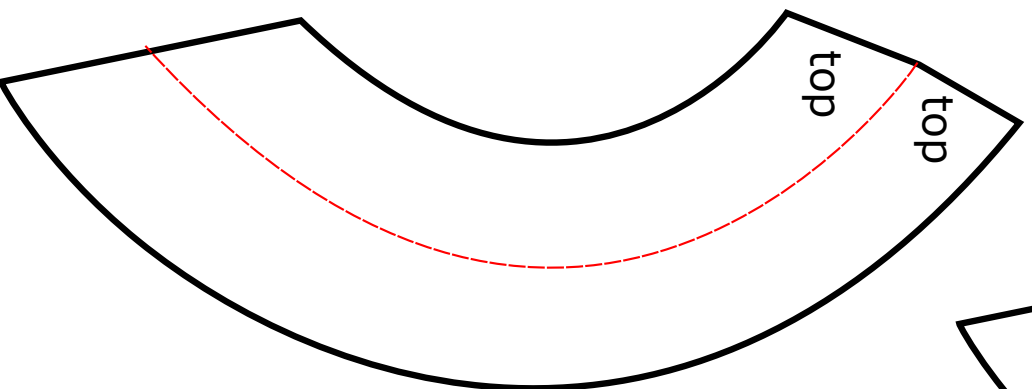
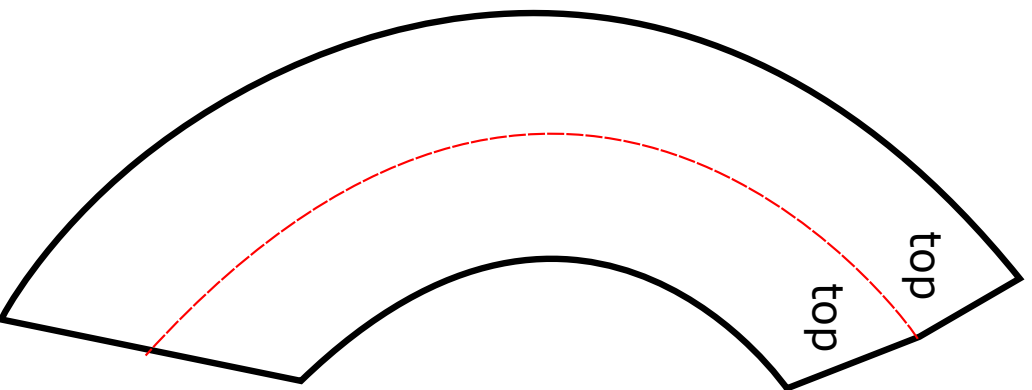
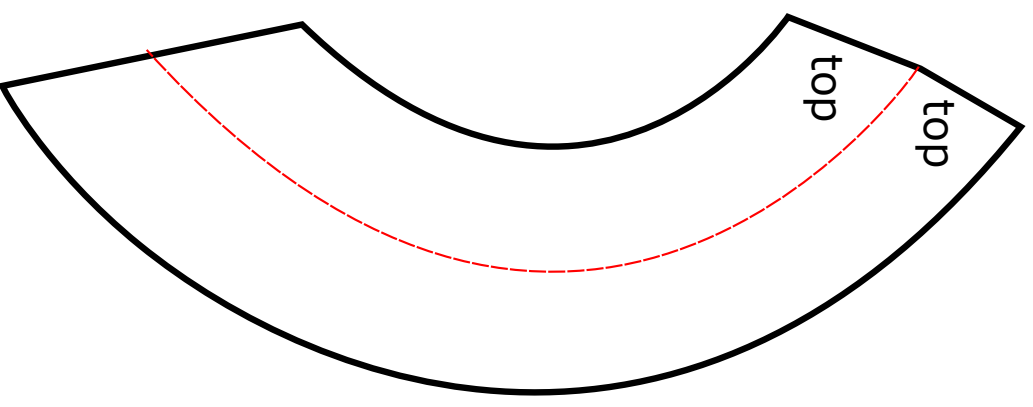
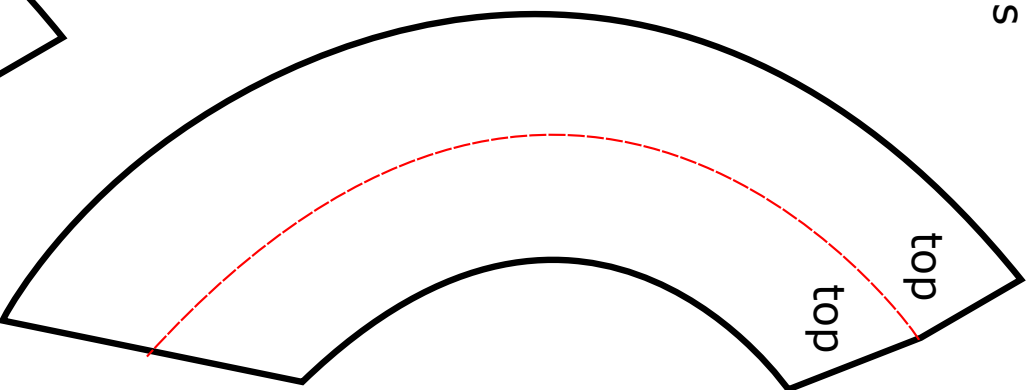


Li Ming's Belt -
scaled larger for bevel cuts





thigh armor jewel bevels



Front White Skirt Spike Bevel cuts

