

Sugar Plum Mercy Wings (2018 Legendary Skin) Print Scale Chart

For use with C'est La Sara Cosplay Patterns Only

For this particular pattern, make sure BOTH pages are using the SAME scale %!

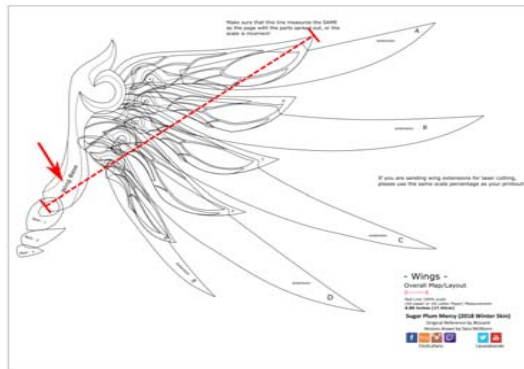
What percent % should I increase the picture size to when printing? See the green column!

For more tutorials on printing out my patterns to your size, please visit:

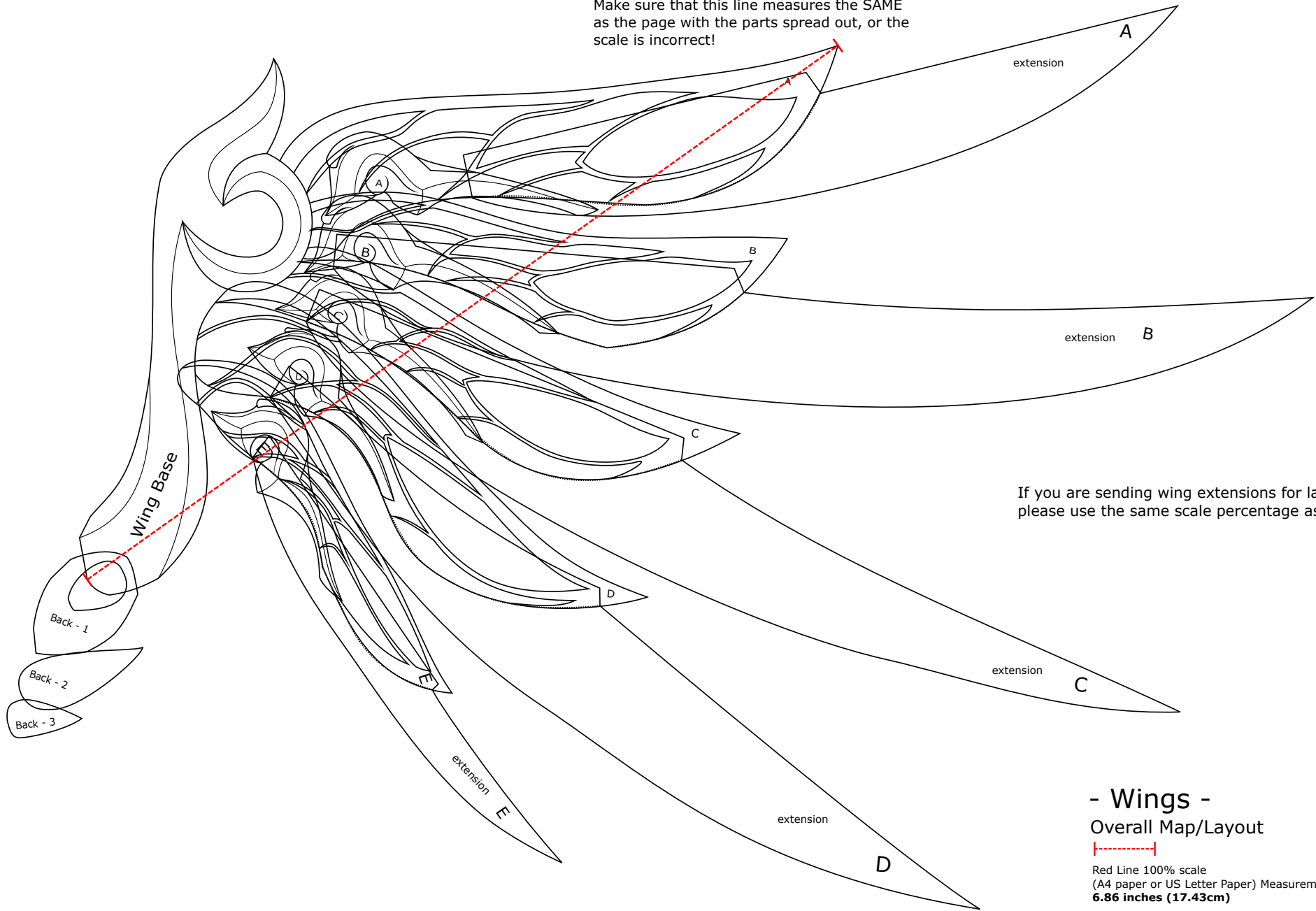
www.cestlasara.com

| Scale Percent (%) | Wingspan base to tip (inches) | Wingspan base to tip (Feet) | Wingspan base to tip (cm) | Cosplayer Height (Feet, inches) | Cosplayer Height (m) |
|-------------------|-------------------------------|-----------------------------|---------------------------|---------------------------------|----------------------|
| 100 | 6.86 | 0.57 | 17.42 | ---- | 1.28 |
| 262 | 18 | 1.50 | 45.72 | 3'7" | 1.09 |
| 277 | 19 | 1.58 | 48.26 | 3'9" | 1.15 |
| 292 | 20 | 1.67 | 50.80 | 3'11" | 1.22 |
| 306 | 21 | 1.75 | 53.34 | 4'2" | 1.28 |
| 321 | 22 | 1.83 | 55.88 | 4'4" | 1.34 |
| 335 | 23 | 1.92 | 58.42 | 4'7" | 1.4 |
| 350 | 24 | 2.00 | 60.96 | 4'9" | 1.46 |
| 364 | 25 | 2.08 | 63.50 | 4'11" | 1.52 |
| 379 | 26 | 2.17 | 66.04 | 5'2" | 1.58 |
| 394 | 27 | 2.25 | 68.58 | 5'4" | 1.64 |
| 408 | 28 | 2.33 | 71.12 | 5'7" | 1.7 |
| 423 | 29 | 2.42 | 73.66 | 5'9" | 1.76 |
| 437 | 30 | 2.50 | 76.20 | 5'11" | 1.82 |
| 452 | 31 | 2.58 | 78.74 | 6'2" | 1.88 |
| 466 | 32 | 2.67 | 81.28 | 6'4" | 1.94 |
| 481 | 33 | 2.75 | 83.82 | 6'6" | 2.01 |
| 496 | 34 | 2.83 | 86.36 | 6'9" | 2.07 |

*Recommended for adult size (Mercy 1:1 scale)



Make sure that this line measures the SAME as the page with the parts spread out, or the scale is incorrect!



If you are sending wing extensions for laser cutting, please use the same scale percentage as your printout!

- Wings - Overall Map/Layout

Red Line 100% scale
(A4 paper or US Letter Paper) Measurement
6.86 inches (17.43cm)

Sugar Plum Mercy (2018 Winter Skin)

Original Reference by Blizzard
Vectors drawn by Sara McMunn

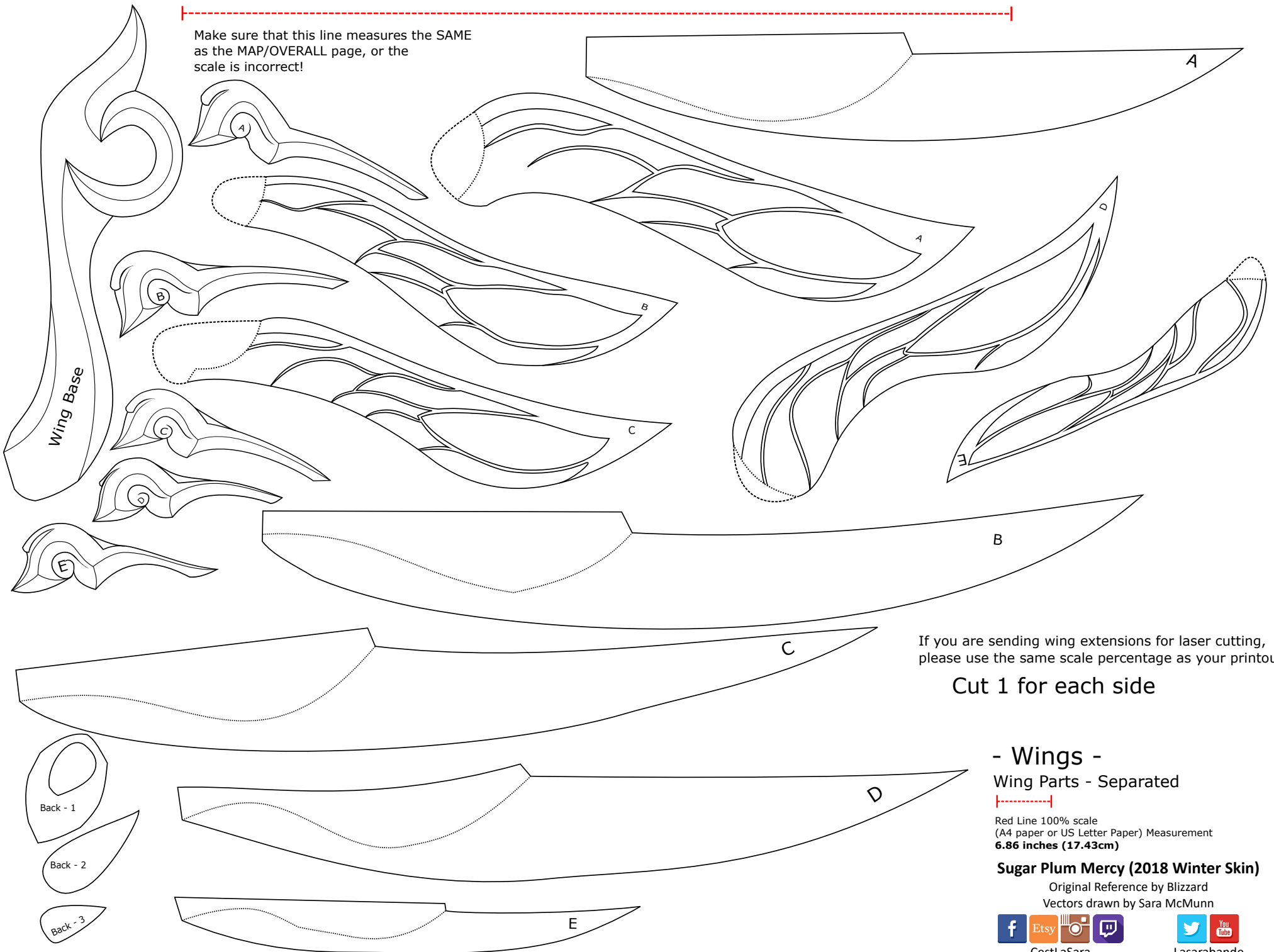


CestLaSara



Lasarabande

Make sure that this line measures the SAME as the MAP/OVERALL page, or the scale is incorrect!



If you are sending wing extensions for laser cutting, please use the same scale percentage as your printout!

Cut 1 for each side

- Wings - Wing Parts - Separated

Red Line 100% scale
(A4 paper or US Letter Paper) Measurement
6.86 inches (17.43cm)

Sugar Plum Mercy (2018 Winter Skin)

Original Reference by Blizzard
Vectors drawn by Sara McMunn



CestLaSara



Lasarabande