

Belt Buckle Placement

1:1 Size Printout

Notes:

- Do NOT select "Fit to Page" when printing
- No need to scale unless another size is desired
- Adult size printout

ZhuQue Mercy's Belt Buckle

Original Reference by Blizzard

Vectors drawn by Sara McMunn



CestLaSara

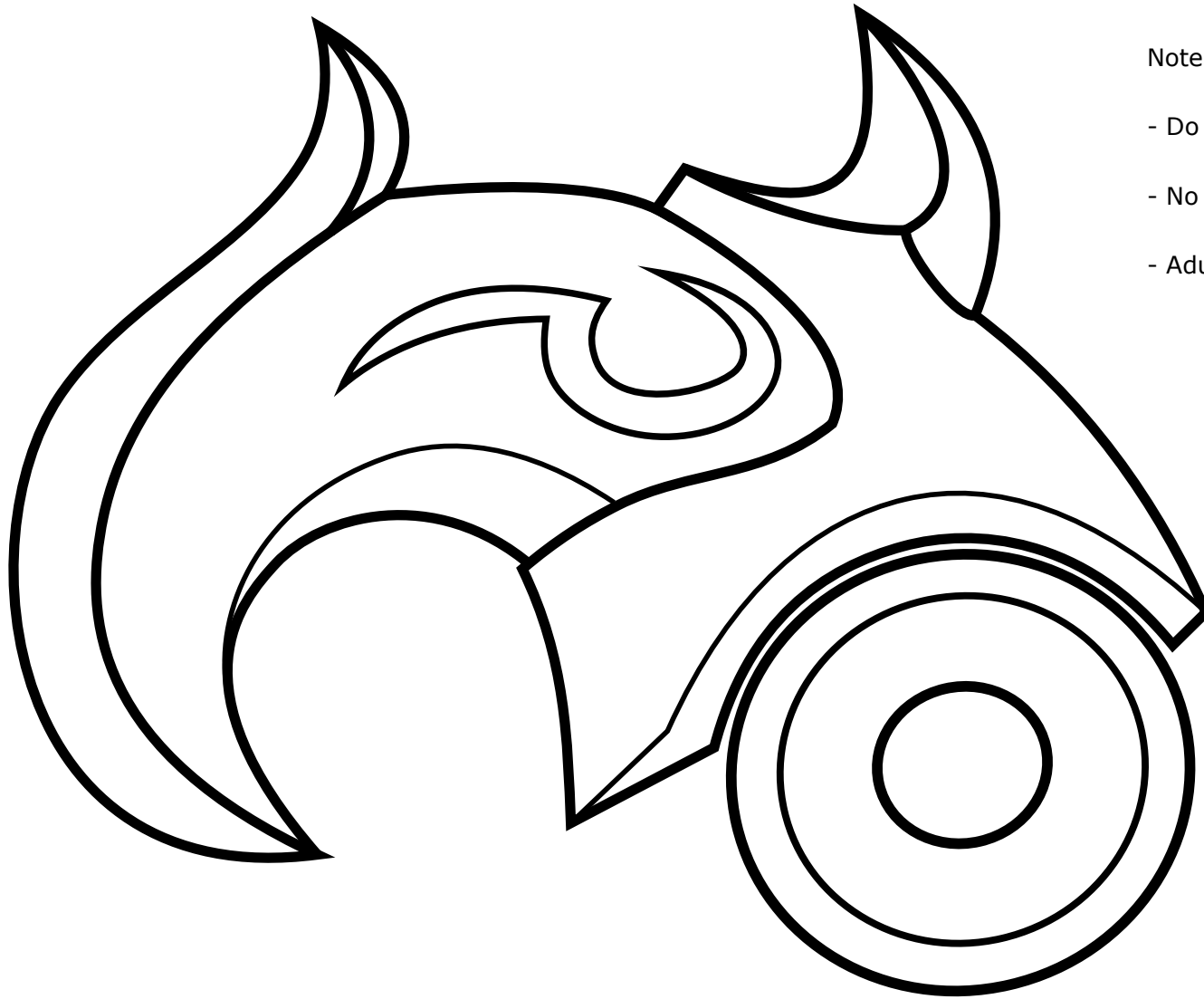


Lasarabande

1:1 Size Printout

Notes:

- Do NOT select "Fit to Page" when printing
- No need to scale unless another size is desired
- Adult size printout



ZhuQue Mercy's Crown

Original Reference by Blizzard

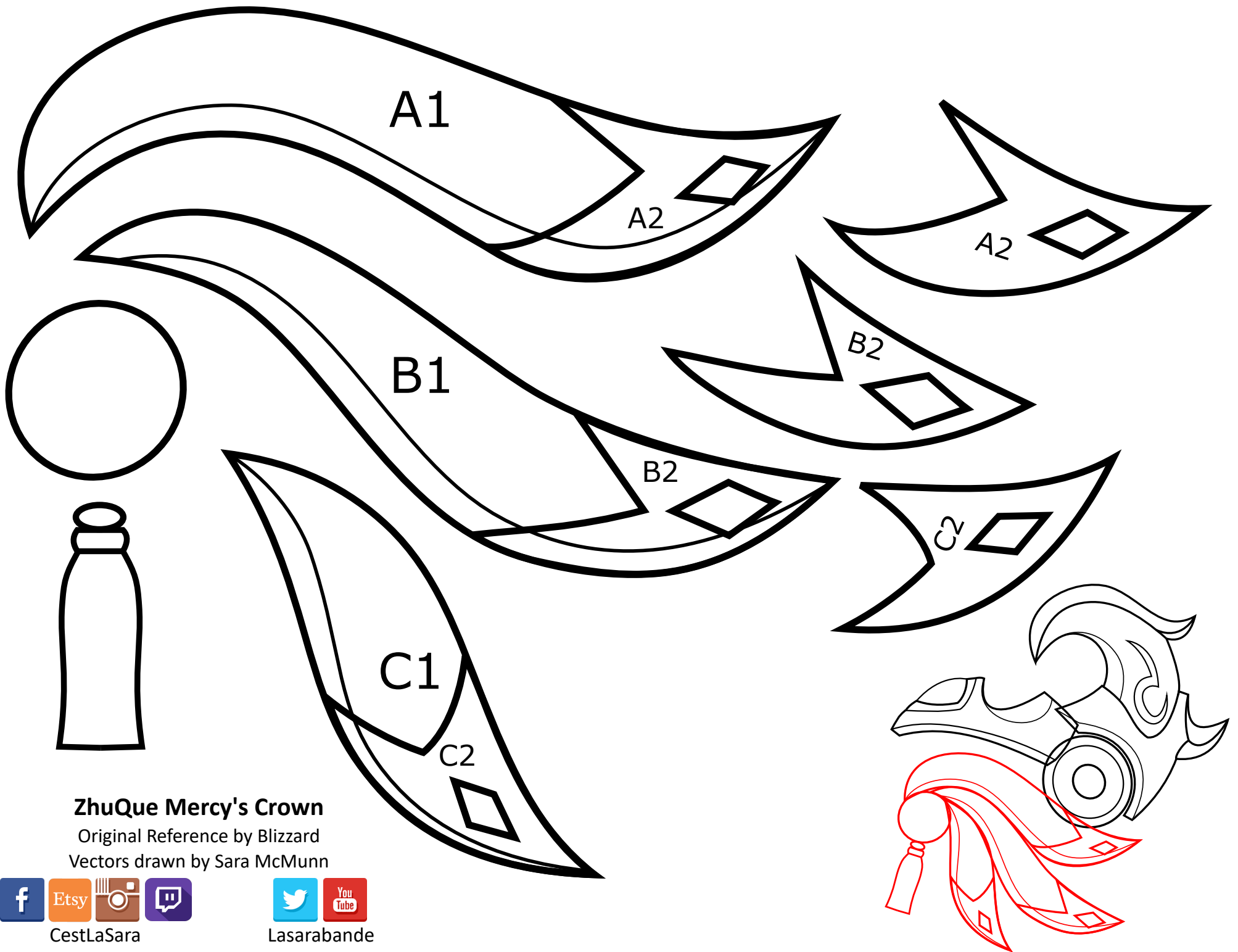
Vectors drawn by Sara McMunn

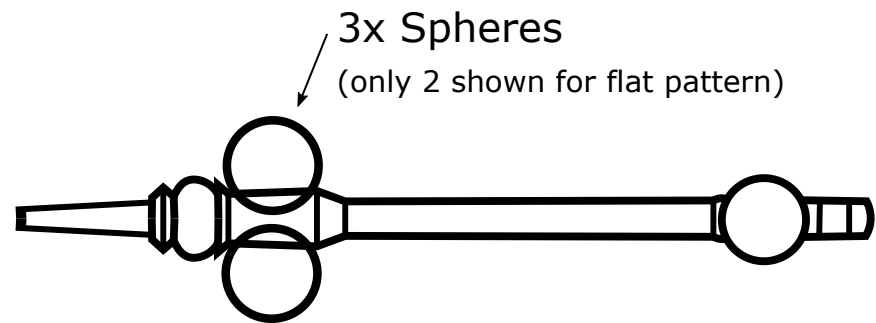


CestLaSara

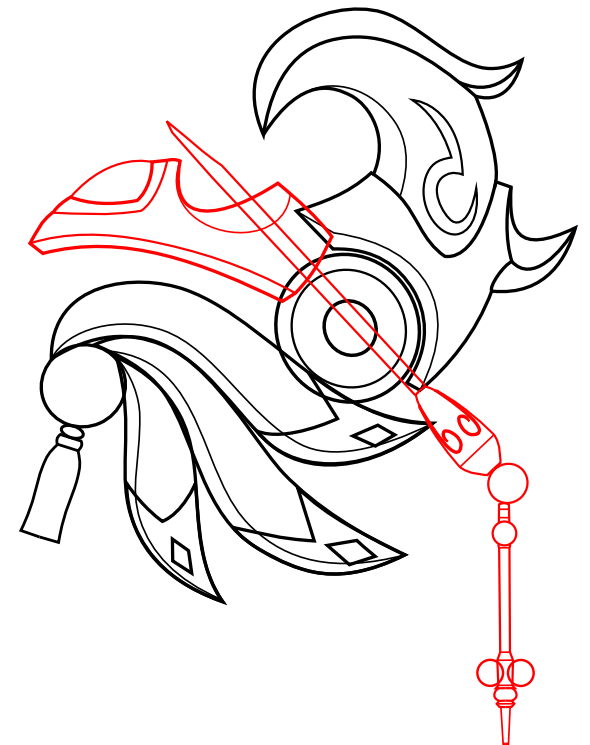
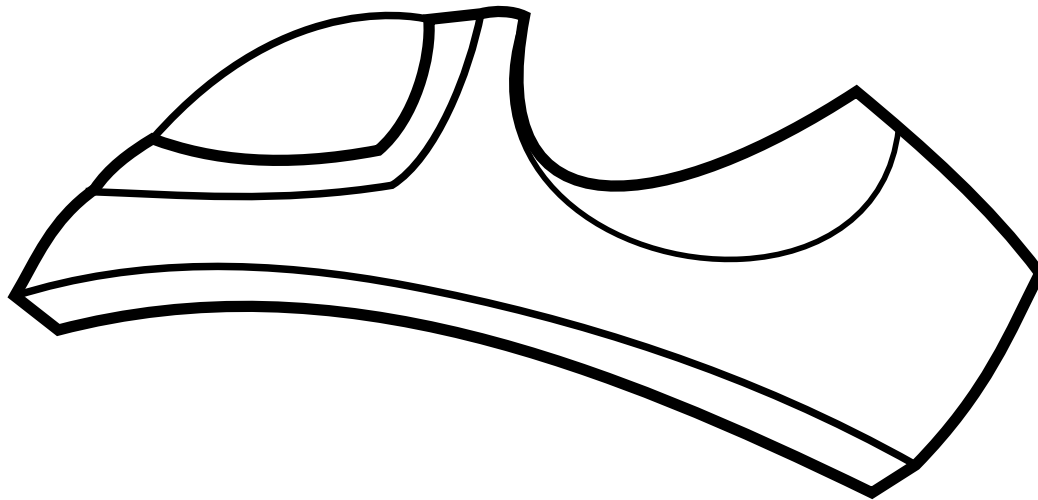
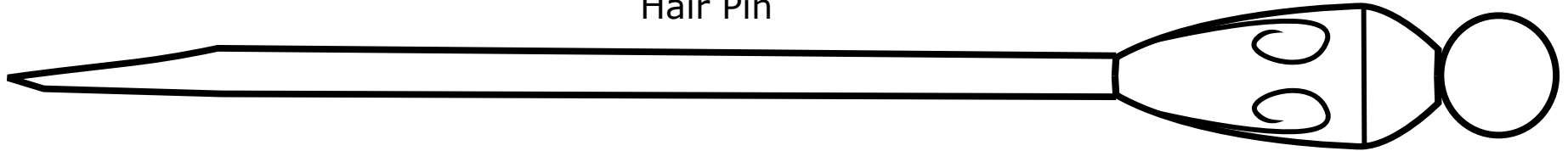


Lasarabande





Hair Pin



ZhuQue Mercy's Crown

Original Reference by Blizzard

Vectors drawn by Sara McMunn



CestLaSara

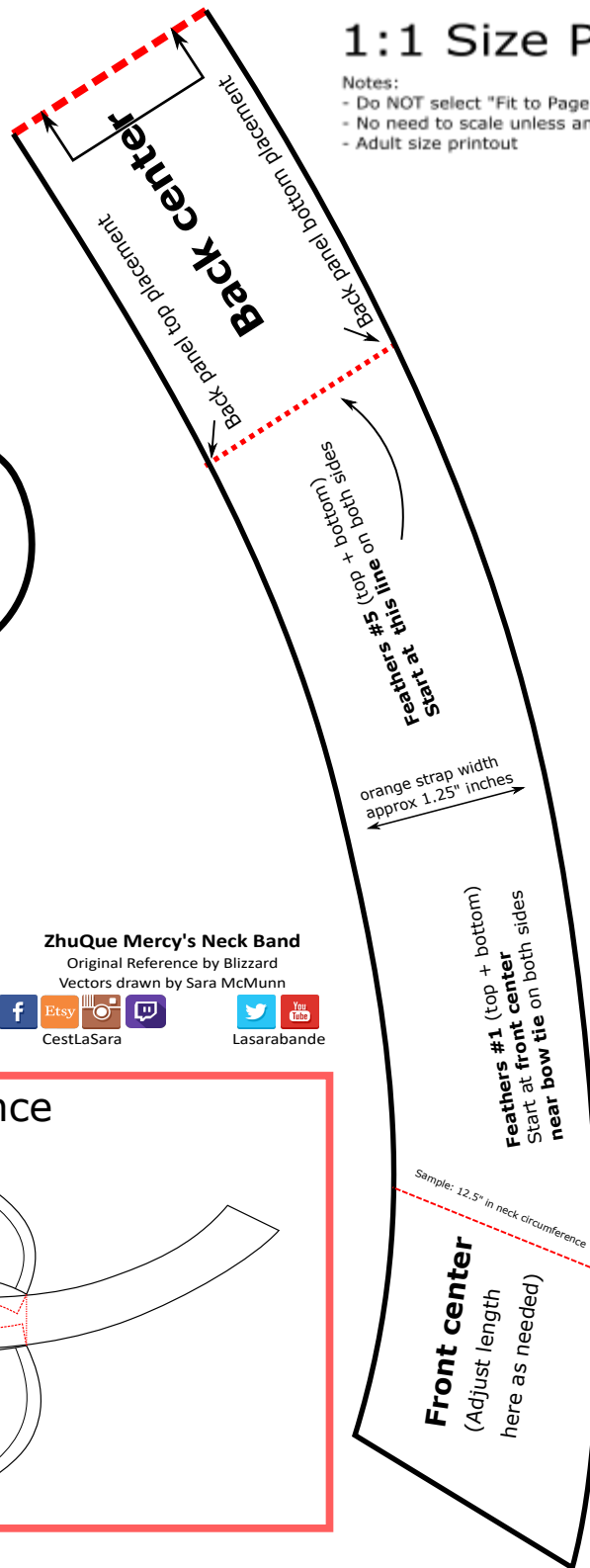


Lasarabande

1:1 Size Printout

Notes:

- Do NOT select "Fit to Page" when printing
- No need to scale unless another size is desired
- Adult size printout

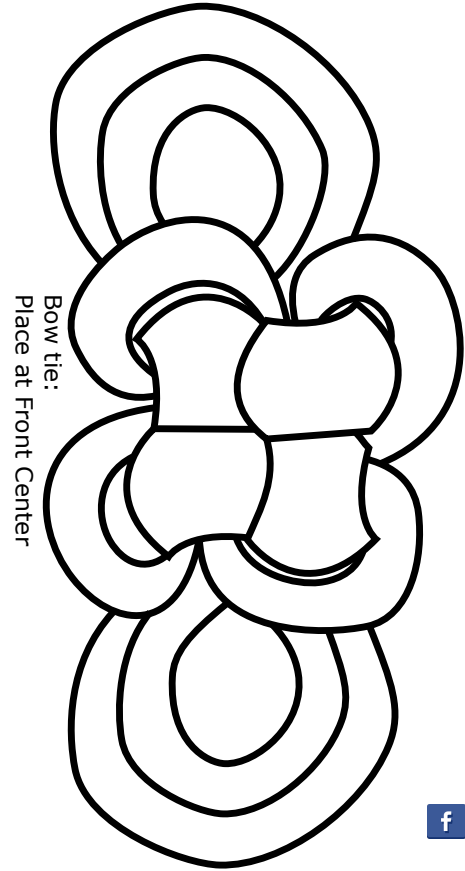


Neck
Back Panel Top

(Under Band)

Neck
Back Panel Bottom

(Under Band)

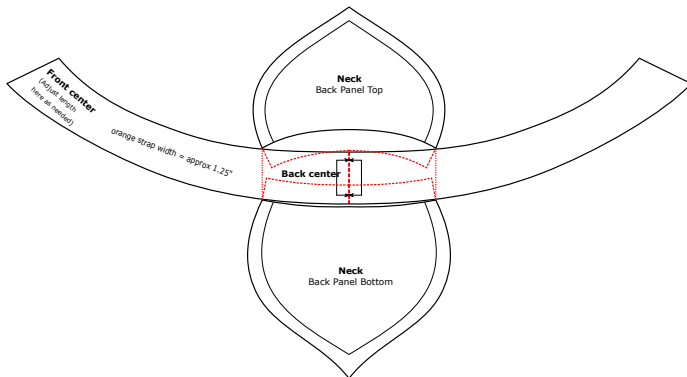


ZhuQue Mercy's Neck Band

Original Reference by Blizzard
Vectors drawn by Sara McMunn



Reference



Cut feathers individually,
leaving extra room at the base of each feather



Feathers - Both sides, mirrored

- **#1 top+bottom** start at the front center near bow tie
- **#5 top+bottom** start at the back where the top and bottom panels are attached



1:1 Size Printout

Notes:

- Do NOT select "Fit to Page" when printing
- No need to scale unless another size is desired
- Adult size printout

ZhuQue Mercy's Neck Band

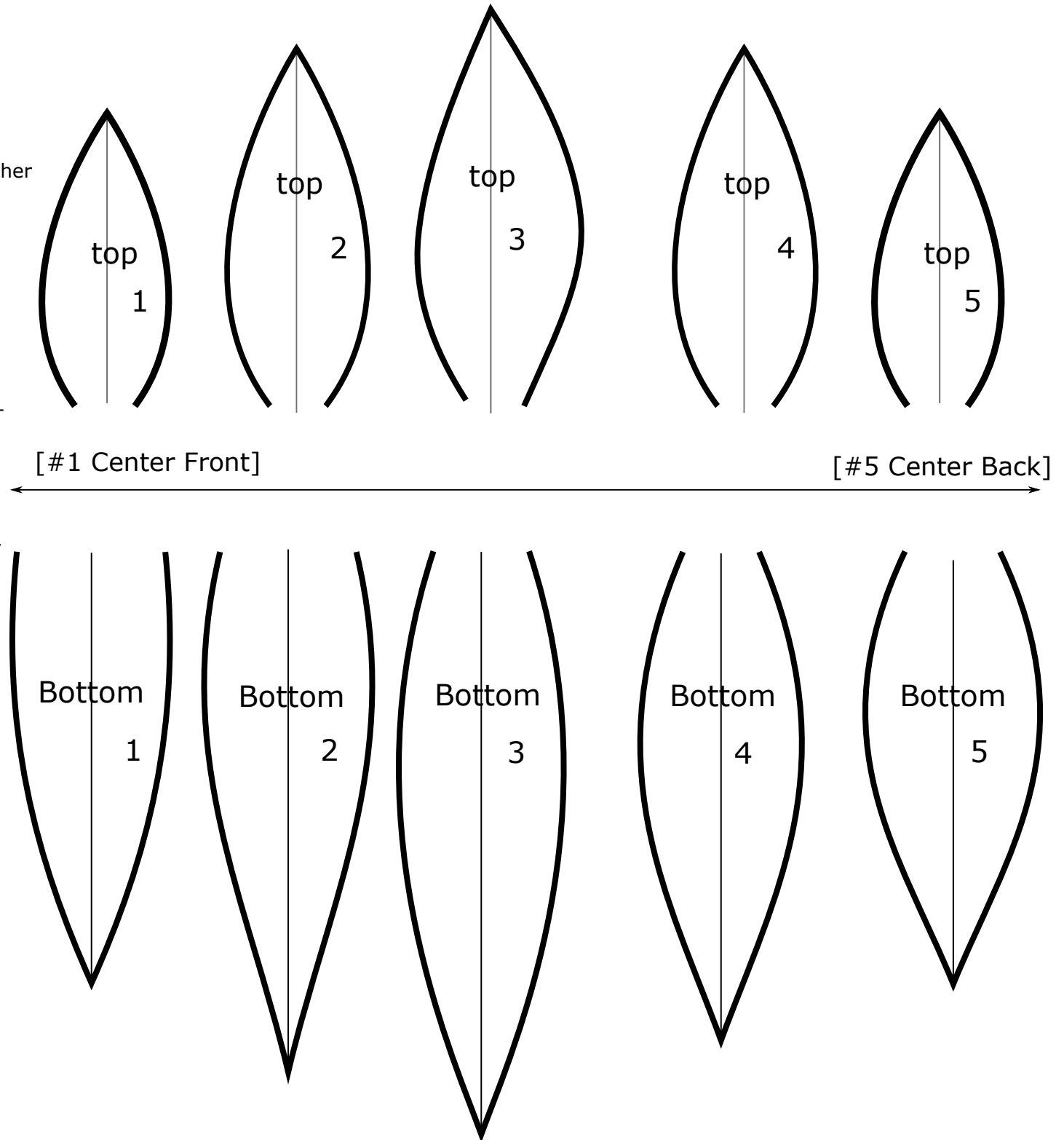
Original Reference by Blizzard
Vectors drawn by Sara McMunn

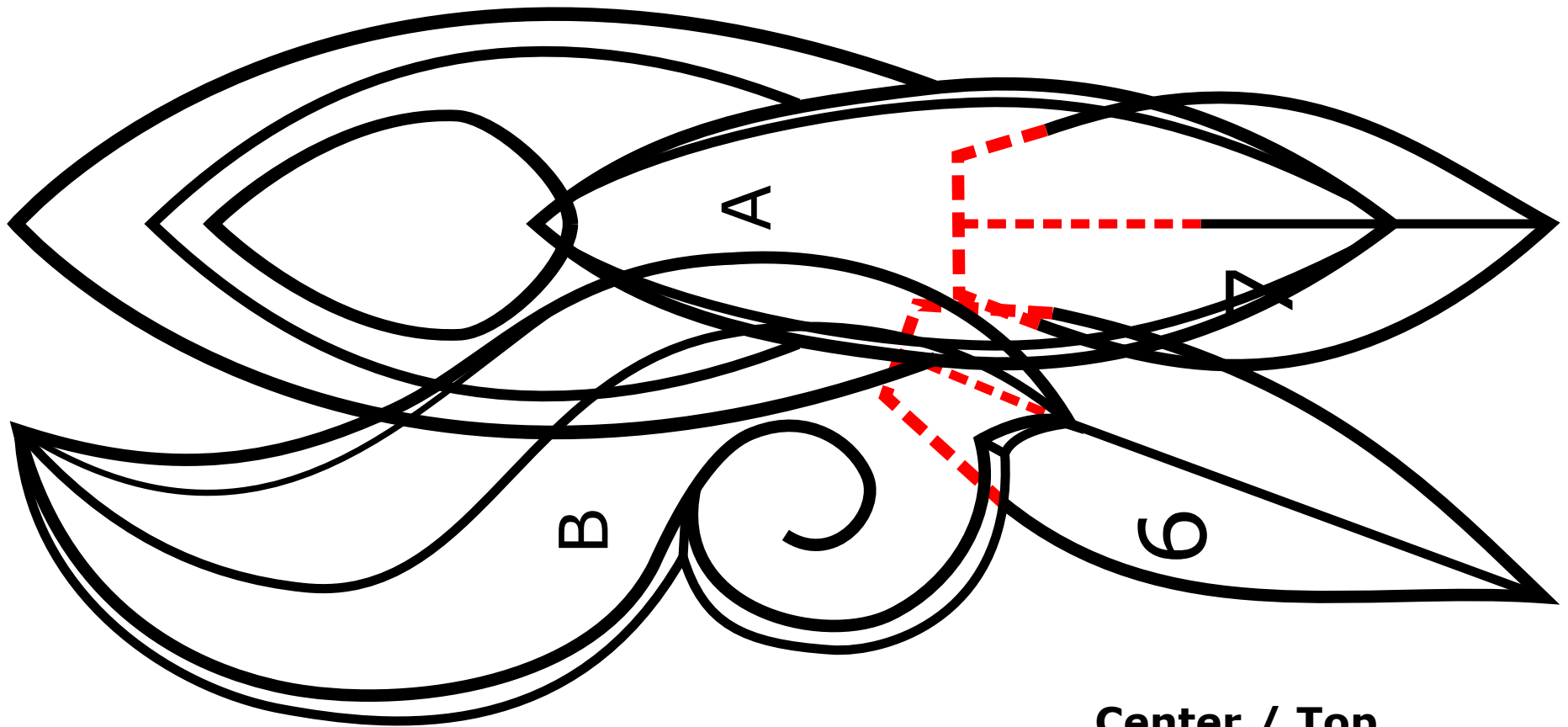


CestLaSara



Lasarabande





Center / Top (Placement Guide)

1:1 Size Printout

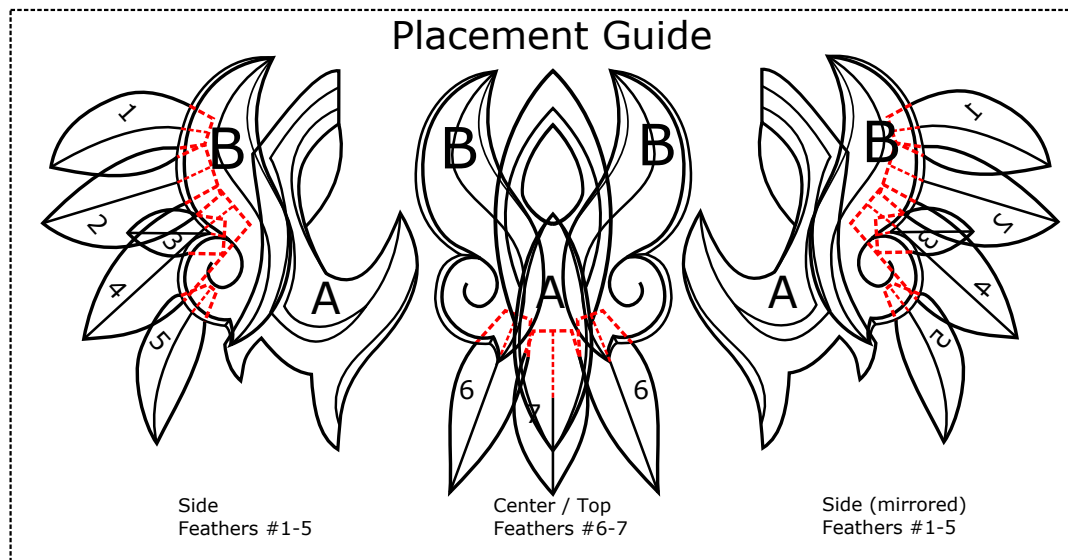
Notes:

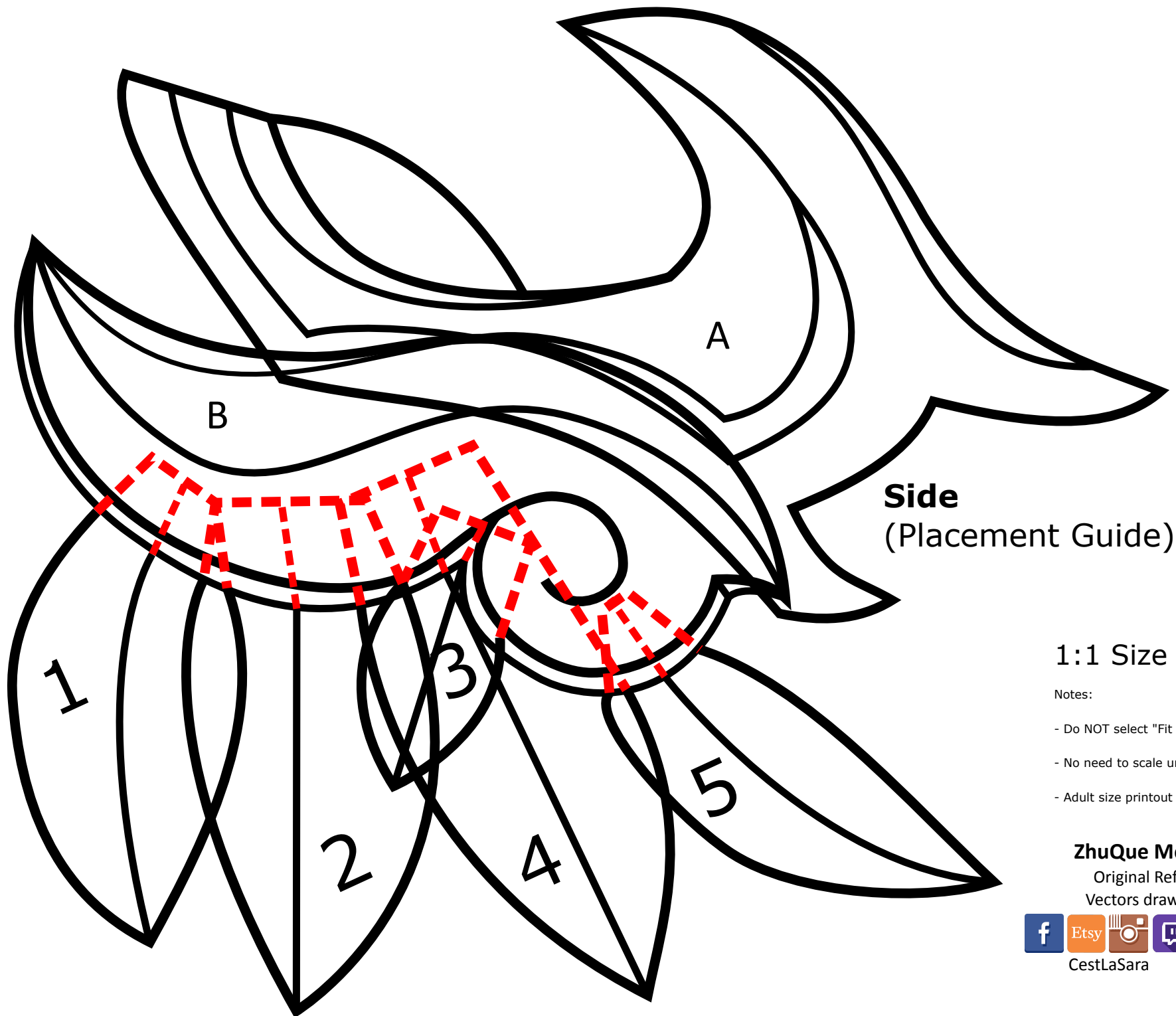
- Do NOT select "Fit to Page" when printing
- No need to scale unless another size is desired
- Adult size printout

ZhuQue Mercy's Shoulders

Original Reference by Blizzard

Vectors drawn by Sara McMunn





Side
(Placement Guide)

1:1 Size Printout

Notes:

- Do NOT select "Fit to Page" when printing
- No need to scale unless another size is desired
- Adult size printout

ZhuQue Mercy's Shoulders

Original Reference by Blizzard

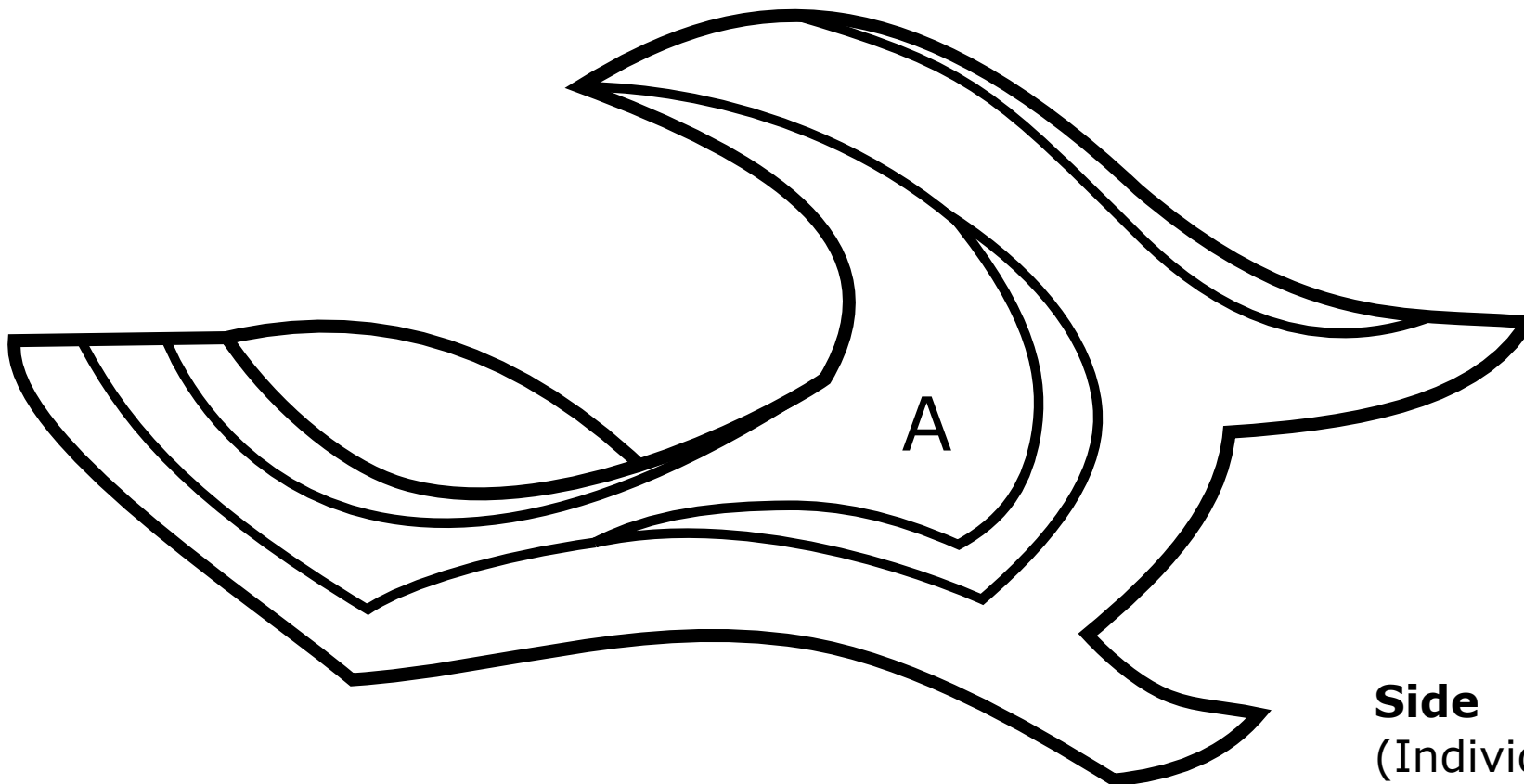
Vectors drawn by Sara McMunn



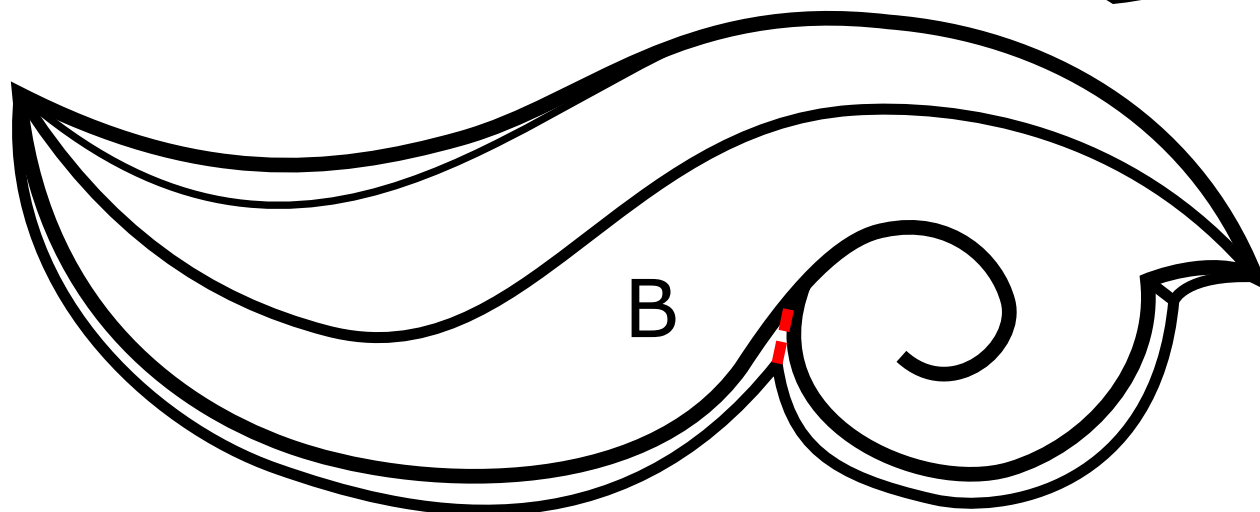
CestLaSara



Lasarabande



A



B

Side (Individual Parts)

1:1 Size Printout

Notes:

- Do NOT select "Fit to Page" when printing
- No need to scale unless another size is desired
- Adult size printout

ZhuQue Mercy's Shoulders

Original Reference by Blizzard

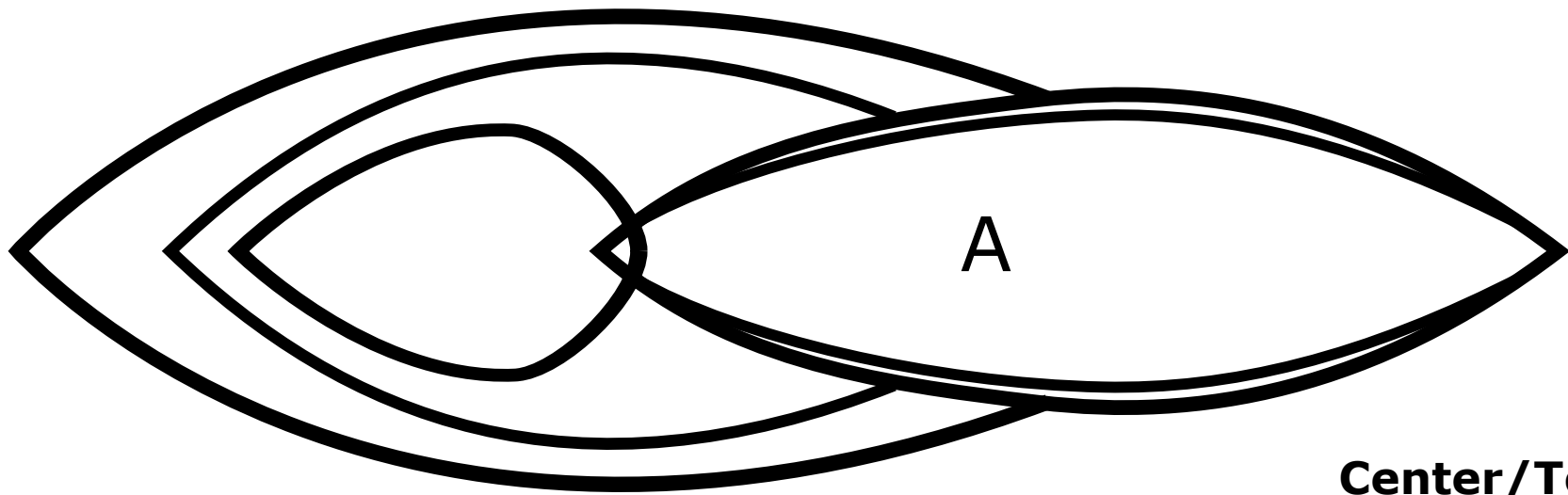
Vectors drawn by Sara McMunn



CestLaSara



Lasarabande



Center/Top (Individual Parts)

1:1 Size Printout

Notes:

- Do NOT select "Fit to Page" when printing
- No need to scale unless another size is desired
- Adult size printout

ZhuQue Mercy's Shoulders

Original Reference by Blizzard

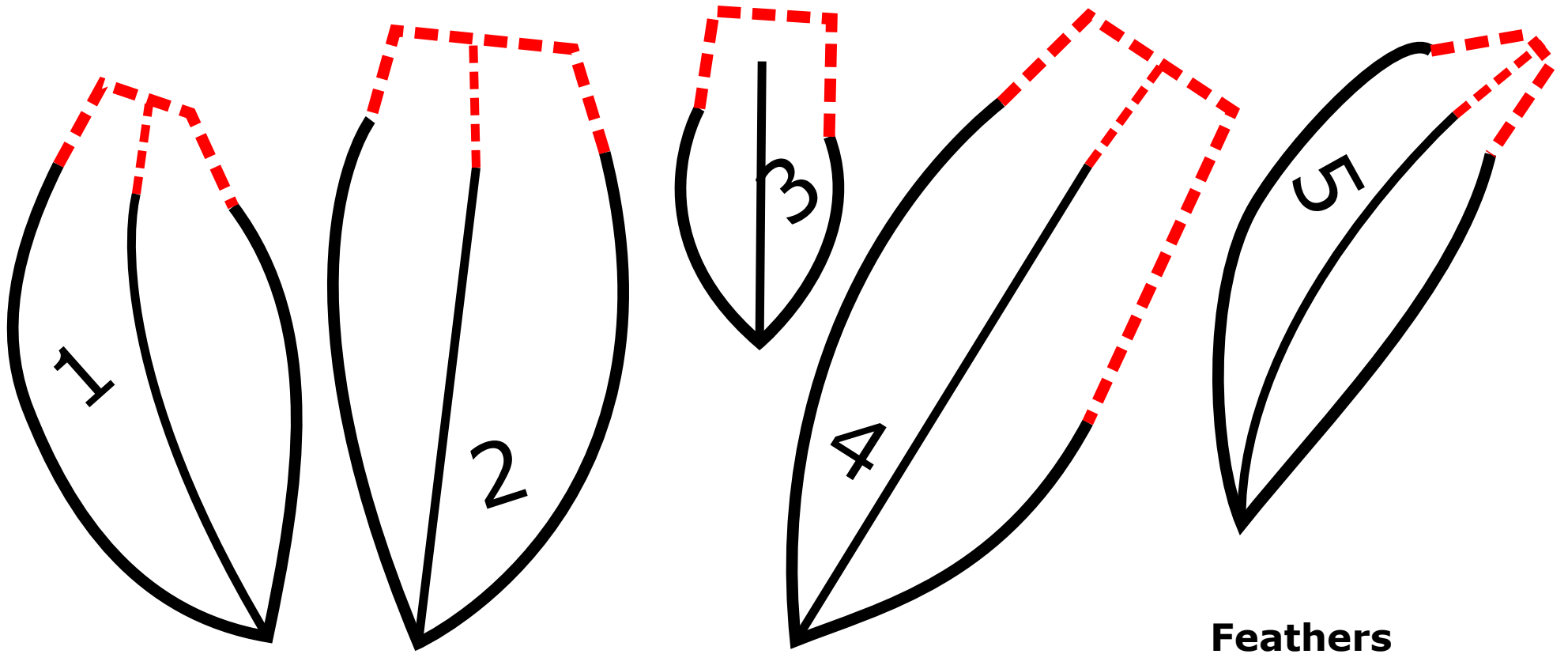
Vectors drawn by Sara McMunn



CestLaSara



Lasarabande



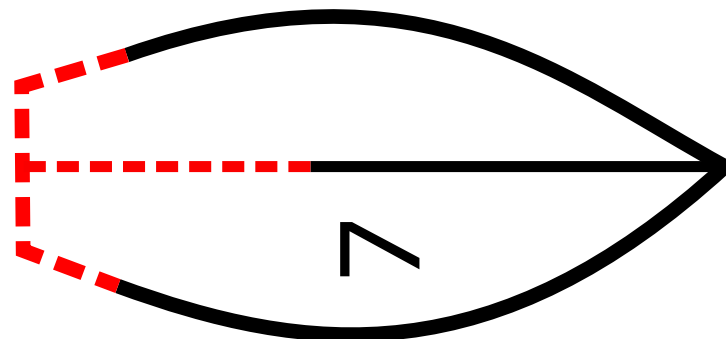
Feathers (Individual Parts)

1:1 Size Printout

Notes:

- Do NOT select "Fit to Page" when printing
- No need to scale unless another size is desired
- Adult size printout

top/center view



ZhuQue Mercy's Shoulders

Original Reference by Blizzard

Vectors drawn by Sara McMunn



CestLaSara

Lasarabande